

BALDOR

BALDOR® • RELIANCE

Product Information Packet

CLARK TRANSMISSION CO.

CEM7054T

15//10HP,1765//1470RPM,3PH,60//50HZ,254T

| Part Detail | | | | | | | |
|--------------------|------------------|--------------|-------|----------------|----------|---------------|------------|
| Revision: | - | Status: | PRD/A | Change #: | | Proprietary: | No |
| Type: | AC | Prod. Type: | 0942M | Elec. Spec: | 09WGW980 | CD Diagram: | |
| Enclosure: | XPFC | Mfg Plant: | | Mech. Spec: | 09E689 | Layout: | |
| Frame: | 254TC | Mounting: | F1 | Poles: | 04 | Created Date: | 06-14-2010 |
| Base: | RG | Rotation: | R | Insulation: | B | Eff. Date: | 06-18-2010 |
| Leads: | 9#12 | Literature: | | Elec. Diagram: | | Replaced By: | |
| Nameplate NP1426XP | | | | | | | |
| NO. | | CC | | | | 010A | |
| SER. | | | | | | | |
| SPEC. | 09E689W980G5 | | | | | | |
| CAT.NO. | CEM7054T | | | | | | |
| HP | 15//10 | T. CODE | T3C | | | | |
| VOLTS | 230/460//190/380 | | | | | | |
| AMPS | 36/18//28.8/14.4 | | | | | | |
| RPM | 1765//1470 | | | | | | |
| HZ | 60//50 | PH | 3 | CL | B | | |
| SER.F. | 1.00 | DES | B | CODE | H | | |
| RATING | 40C AMB-CONT | | | | | | |
| FRAME | 254TC | NEMA-NOM-EFF | 92.4 | PF | 84 | | |
| USABLE AT 208V | 37 | | | | | | |

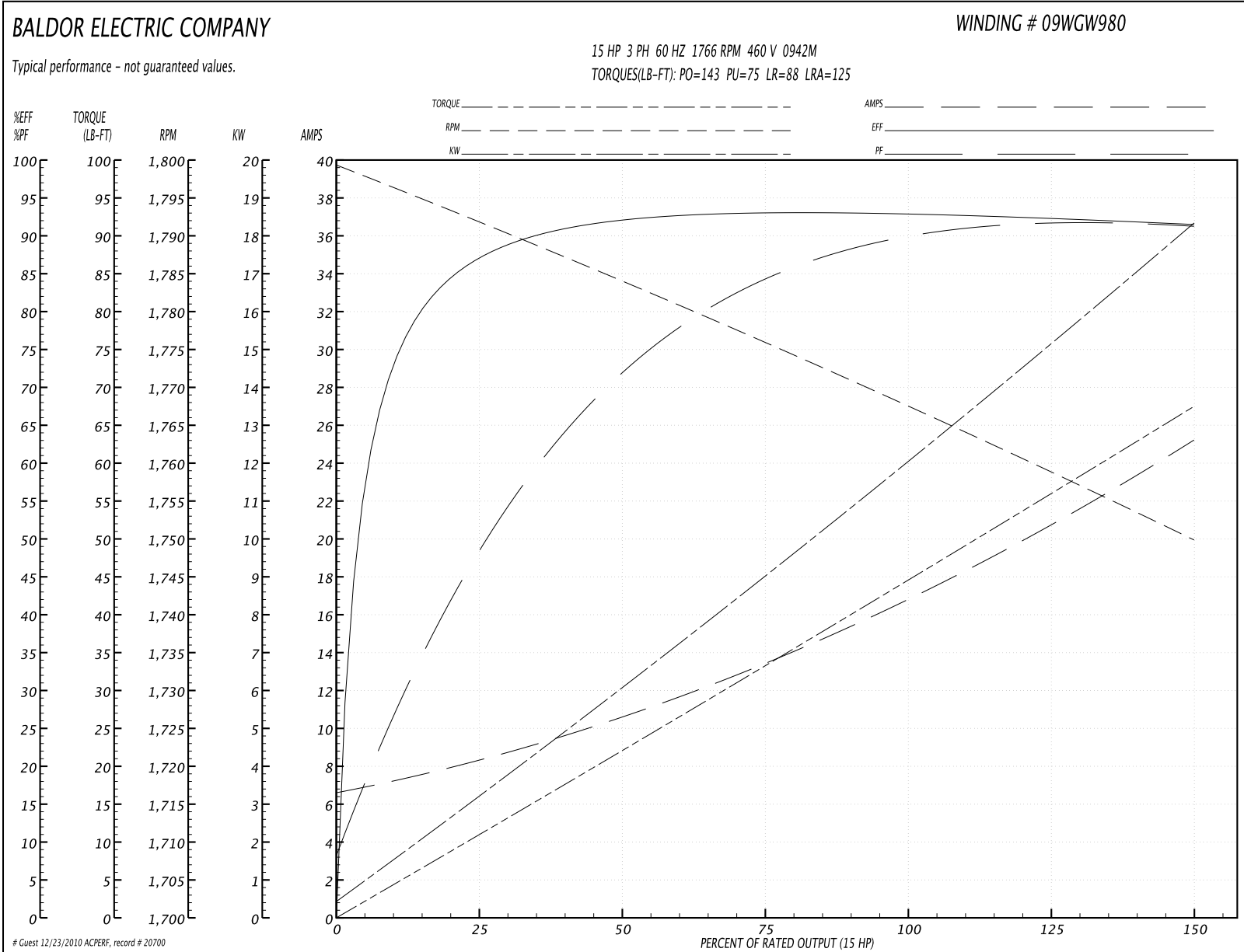
| Parts List | | |
|---------------|--|----------|
| Part Number | Description | Quantity |
| SA198394 | SA 09E689W980G5 | 1.000 EA |
| RA185762 | RA 09E689W980G5 | 1.000 EA |
| MJ5000A01 | SEALANT, CHICO A COMPOUND | 0.050 LB |
| 09CB1000A01SP | CONDUIT BOX, MACH | 1.000 EA |
| 10XN3118K16 | 5/16-18 X 1" GRADE #5, STL, ZINC PLATE | 4.000 EA |
| HW1001A31 | LOCKWASHER 5/16, ZINC PLT.591 OD, .319 I | 4.000 EA |
| WD1000B16 | LUGSDIRECT WIRE LUG, CAT # S4 | 1.000 EA |
| 10XN2520K06 | 1/4-20 X 3/8" HX HD SCREWGRADE 5, ZINC P | 1.000 EA |
| HW1001A25 | LOCKWASHER 1/4, ZINC PLT .493 OD, .255 I | 1.000 EA |
| 09EP1700A01 | FR ENDPLATE, MACH | 1.000 EA |
| 10XN3816K28 | 3/8-16 X 1.75 HEX HD CAP SCREW, GRADE 5 | 4.000 EA |
| HW1001A38 | LOCKWASHER 3/8, ZINC PLT .688 OD, .382 I | 4.000 EA |
| HW5100A08 | W3118-035 WVY WSHR (WB) | 1.000 EA |
| 10XN2520K36 | 1/4-20 X 2.25" HX HD SCRWGRADE 5, ZINC P | 4.000 EA |
| HW1001A25 | LOCKWASHER 1/4, ZINC PLT .493 OD, .255 I | 4.000 EA |
| 09EP1708A02 | FACE MTD. ENDPLATE, MACH X-PROOF (NEW DE | 1.000 EA |
| 10XN3816K28 | 3/8-16 X 1.75 HEX HD CAP SCREW, GRADE 5 | 4.000 EA |
| HW1001A38 | LOCKWASHER 3/8, ZINC PLT .688 OD, .382 I | 4.000 EA |
| 09FH1004A01 | FAN COVER, MACH | 1.000 EA |
| 10XN2520K16 | 1/4-20 X 1" HX HD SCRW GRADE 5, ZINC P | 3.000 EA |
| HW1001A25 | LOCKWASHER 1/4, ZINC PLT .493 OD, .255 I | 3.000 EA |
| 09CB1500A01SP | CONDUIT BOX LID, MACH | 1.000 EA |
| 10XN2520K16 | 1/4-20 X 1" HX HD SCRW GRADE 5, ZINC P | 6.000 EA |
| HW1001A25 | LOCKWASHER 1/4, ZINC PLT .493 OD, .255 I | 6.000 EA |

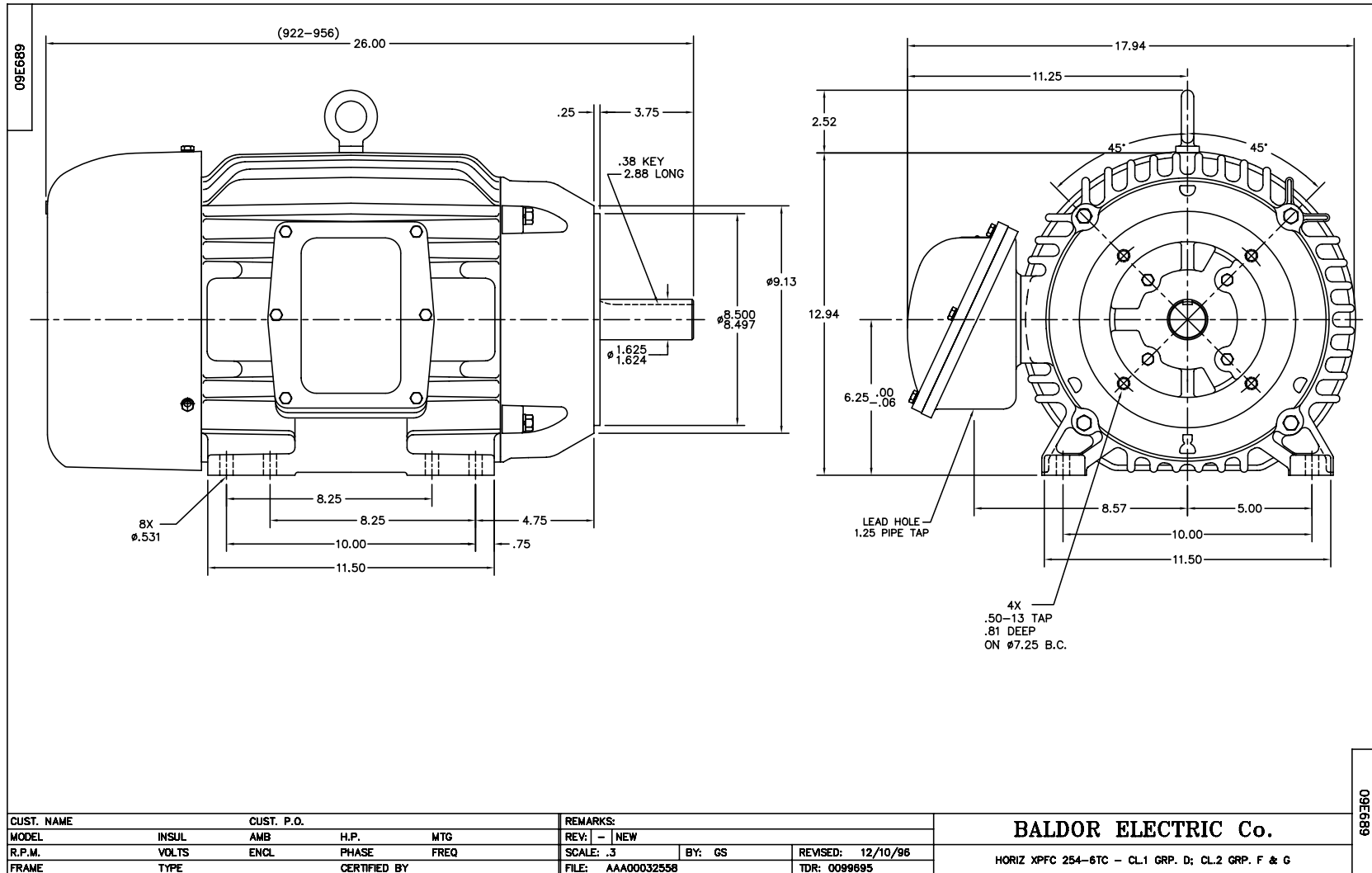
| Parts List (continued) | | |
|------------------------|--|----------|
| Part Number | Description | Quantity |
| HW2501G25 | KEY, 3/8 SQ X 2.875 | 1.000 EA |
| LB1115 | LABEL,LIFTING DEVICE | 1.000 EA |
| LB1073 | LABEL, UL/CSA "XP" | 1.000 EA |
| LB5040 | INSTRUCTION TAG, AC & DC | 1.000 EA |
| HW4500A20 | 1/8NPT SL PIPE PLUG | 2.000 EA |
| MJ1000A02 | GREASE, POLYREX EM EXXON | 0.080 LB |
| HW4500A20 | 1/8NPT SL PIPE PLUG | 2.000 EA |
| 09FN3001D01 | EXTERNAL FAN, PLASTIC | 1.000 EA |
| HW2500A25 | WOODRUFF KEY USA #1008 #BLOW CARBON STEE | 1.000 EA |
| 51XB1214A20 | 12-14X1.25 HXWSSLD SERTYB | 1.000 EA |
| MG1025G05 | PAINT 789.201 (WILCO) DARK GRAY METALLIC | 0.050 GA |
| 85XU0407A04 | #4-7 X 1/4 DRIVE PIN | 6.000 EA |
| LB1119 | WARNING LABEL | 1.000 EA |
| LB1125C02 | SUPER-E (STOCK CTN LABEL SUPER-E WITH FL | 4.000 EA |
| LB1357 | ENERGY GUIDE LABEL (BOX LABEL) | 1.000 SH |
| LC0145B01 | CONNECTION LABEL | 1.000 EA |
| NP1426XP | UL/CSA, CLI GP-D,CLII GP-F&G,CC | 1.000 EA |
| 40PA1005 | PACKAGING GROUP, 09 STD | 1.000 EA |

Performance Data at 460V, 60Hz, 15.0HP (Typical performance - Not guaranteed values)

| General Characteristics | | | | | | | |
|--------------------------|---------------------------------|--------|--------|----------------------|-------------|--------|--------|
| Full Load Torque: | 45.0 LB-FT | | | Start Configuration: | DOL | | |
| No-Load Current: | 6.95 Amps | | | Break-Down Torque: | 143.0 LB-FT | | |
| Line-line Res. @ 25°C.: | 0.577 Ohms A Ph / 0.0 Ohms B Ph | | | Pull-Up Torque: | 75.0 LB-FT | | |
| Temp. Rise @ Rated Load: | 47 C | | | Locked-Rotor Torque: | 88.0 LB-FT | | |
| Temp. Rise @ S.F. Load: | | | | Starting Current: | 125.0 Amps | | |
| Load Characteristics | | | | | | | |
| % of Rated Load | 25 | 50 | 75 | 100 | 125 | 150 | S.F. |
| Power Factor: | 49.0 | 71.0 | 81.0 | 86.0 | 88.0 | 89.0 | 87.0 |
| Efficiency: | 87.9 | 92.1 | 93.0 | 92.8 | 92.3 | 91.5 | 92.5 |
| Speed: | 1792.0 | 1784.0 | 1776.0 | 1766.0 | 1759.0 | 1750.0 | 1762.0 |
| Line Amperes: | 7.9 | 10.5 | 13.7 | 17.2 | 21.0 | 25.0 | 19.5 |

Performance Graph at 460V, 60Hz, 15.0HP Typical performance - Not guaranteed values





CD0005

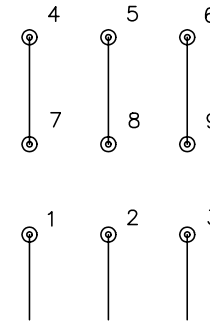


LOW VOLTAGE
(2Y)



LINE

HIGH VOLTAGE
(1Y)



LINE

NOTES:

1. INTERCHANGE ANY TWO LINE LEADS TO REVERSE ROTATION.
2. OPTIONAL THERMOSTATS ARE PROVIDED WHEN SPECIFIED.
3. ACTUAL NUMBER OF INTERNAL PARALLEL CIRCUITS MAY BE A MULTIPLE OF THOSE SHOWN ABOVE.
4. LEAD COLORS ARE OPTIONAL. LEADS MUST ALWAYS BE NUMBERED AS SHOWN.

REV. DESC: REVISE TO SHOW OPTIONAL COLORS

REV. LTR: E BY: JLP

REVISED: 01/19/99 10:15

TDR: 0171435

900000

FILE: AAA00005140

MDL: -

MTL: -

BALDOR ELECTRIC Co.

3PH, DV, 9 LEADS

CD0005