

BALDOR® • RELIANCE

Product Information Packet

M7085T

40/50HP, 975/1180RPM, 3PH, 50/60HZ, 365T

Product Detail							
Revision:	J	Status:	UNR/A	Change #:		Proprietary:	No
Type:	AC	Prod Type:	1456M	Elec. Spec:	14WGW769	CD Diagram:	
Enclosure	XPFC	Mfg Plant:		Mech Spec:	14F01	Layout:	14LYF001
Frame:	365T	Mounting:	F1	Poles:	06	Created Date:	
Base:	RG	Rotation:	R	Insulation:	B	Eff. Date:	06-05-2007
Leads:		Literature:		Elec. Diagram:		Replaced By:	

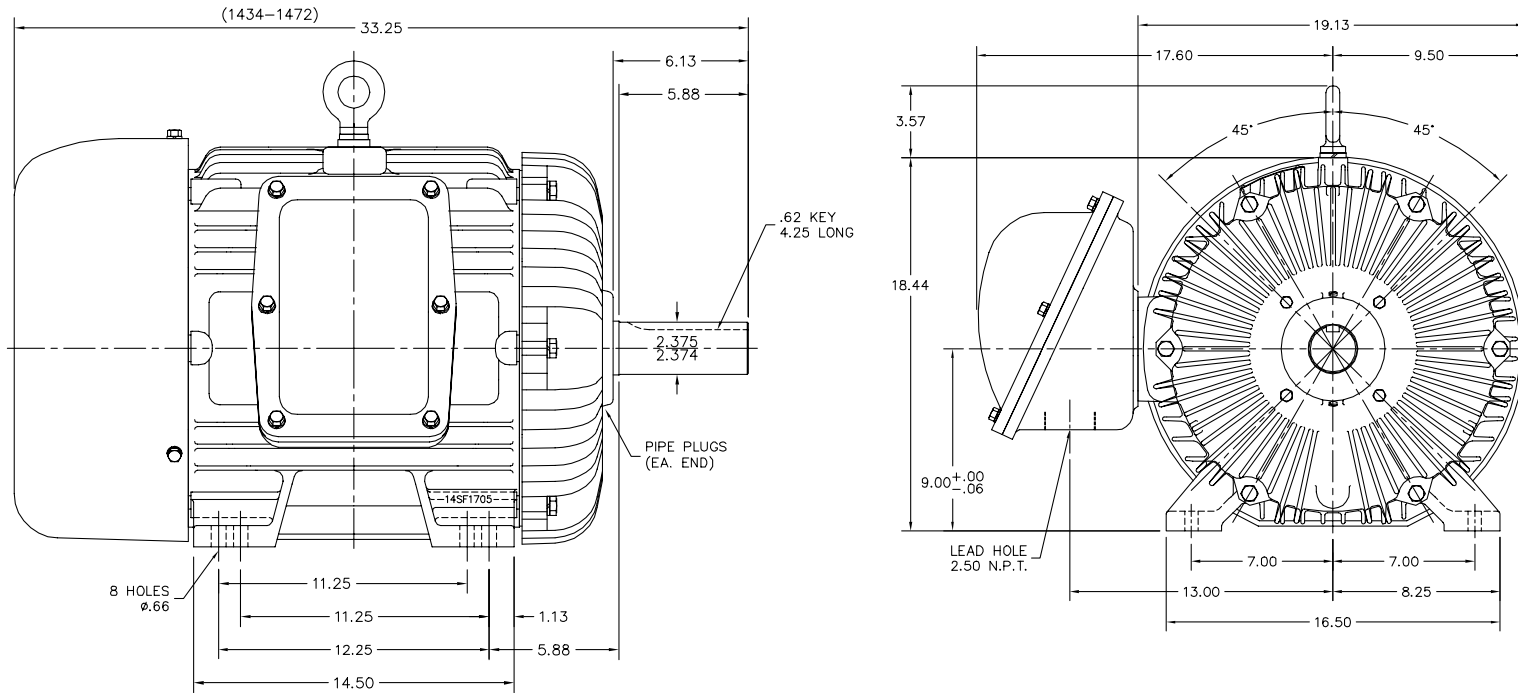
Nameplate NP1426XP

NO.		CC	010A				
SER.							
SPEC.	14F001W769H1						
CAT.NO.	M7085T						
HP	50//40	T. CODE	T4				
VOLTS	230/460//190/380						
AMPS	122/61//120/60						
RPM	1180//975						
HZ	60//50	PH	3	CL	B		
SER.F.	1.00	DES	B	CODE	H		
RATING	40C AMB-CONT						
FRAME	365T	NEMA-NOM-EFF	93	PF	83		
USABLE AT 208V	130						

Parts List			
Product ID	Description	Quantity	List Price
SA044770	SA 14F001W769H1	1.000	4,346.00
RA040186	RA 14F001W769H1	1.000	3,622.00
14CB1000A01	CONDUIT BOX MACH	1.000	491.00
10XN3816K20	3/8-16 X 1.25 HEX HD CAP GRADE 5	4.000	2.00
HW1001A38	LOCKWASHER 3/8, ZINC PLT .688 OD, .382 I	4.000	2.00
WD1000B16	KPA-4C BURNDY TERMINAL	1.000	4.00
10XN2520K08	1/4-20 X .50 GRADE #5, STL, ZINC PLATE	1.000	2.00
HW1001A25	LOCKWASHER 1/4, ZINC PLT .493 OD, .255 I	1.000	2.00
14EP1700A01	FR ENDPLATE, MACH	1.000	552.00
HA3051A03	1/2-13X2.75 BLT GR8 1.75 TO E NC F/S	6.000	12.00
HW1001A50	LOCKWASHER 1/2, ZINC PLT,.879 OD, .509 I	6.000	2.00
HW5100A15	W4997-050 WVY WSHR (WB)	1.000	18.00
10XN3816K44	3/8-16 X 2.75 HEX HD CAP SCREW, GRADE 5	4.000	2.00
HW1001A38	LOCKWASHER 3/8, ZINC PLT .688 OD, .382 I	4.000	2.00
14EP1701A09	PU ENDPLATE, MACH	1.000	1,202.00
HA3051A03	1/2-13X2.75 BLT GR8 1.75 TO E NC F/S	6.000	12.00
HW1001A50	LOCKWASHER 1/2, ZINC PLT,.879 OD, .509 I	6.000	2.00
14FH1001A01	FAN COVER, MACH	1.000	381.00
10XN3816K16	3/8-16 X 1 HEX HD CAP GRADE 5	3.000	2.00
HW1001A38	LOCKWASHER 3/8, ZINC PLT .688 OD, .382 I	3.000	2.00
14CB1500A01	CONDUIT BOX LID MACH	1.000	137.00
10XN3816K20	3/8-16 X 1.25 HEX HD CAP GRADE 5	6.000	2.00
HW1001A38	LOCKWASHER 3/8, ZINC PLT .688 OD, .382 I	6.000	2.00
HW2501J36	KEY, 5/8 SQ X 4.250	1.000	2.00

Parts List (continued)			
Product ID	Description	Quantity	List Price
LB1115	LABEL,LIFTING DEVICE (ON ROLLS0	1.000	2.00
HW4500A20	1/8NPT SL PIPE PLUG	2.000	2.00
MJ1000A02	GREASE, POLYREX EM EXXON	0.220	10.00
HW4500A20	1/8NPT SL PIPE PLUG	2.000	2.00
14FN5000A01	STD EXT FAN ASS'Y W/14FN3000A01	1.000	183.00
MG1025G05	PAINT DRK MET.GRAY,W/ACTIVATOR	0.140	182.00
85XU0407A04	#4-7 X 1/4 DRIVE PIN	6.000	2.00
LB1073	LABEL, UL/CSA "XP"	1.000	2.00
LB5040	INSTRUCTION TAG, AC & DC	1.000	2.00
LB1119	WARNING LABEL	1.000	2.00
LB1125C04	STD-E (STOCK CTN LABEL STD-E WITH FLAG)	4.000	2.00
LC0145B01	CONNECTION LABEL	1.000	2.00
NP1426XP	UL/CSA, CLI GP-D,CLII GP-F&G,CC	1.000	
14PA1000	PACKAGING GROUP COMBINED PRINT	1.000	297.00

14LYF001



CUSTOMER IS RESPONSIBLE FOR DETERMINING THAT MOTOR PERFORMANCE IS SUITABLE IN THE APPLICATION.

REV. DESC: REVISED STACK RANGE		
REV. LTR: E	VERSION: 01	TDR: 000000416742
FILE: \AAA\00004\789	REVISED: 15:03:28 12/12/2006	BY: ENKENTO
MTL: -		

BALDOR ELECTRIC Co.

STD HORZ TEFC 364-5T EXPLOSION PROOF MTR.

14LYF001