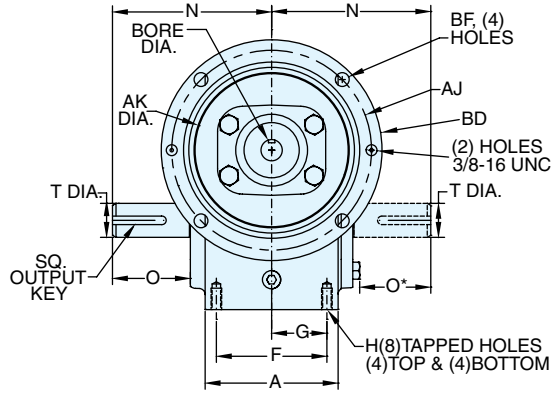
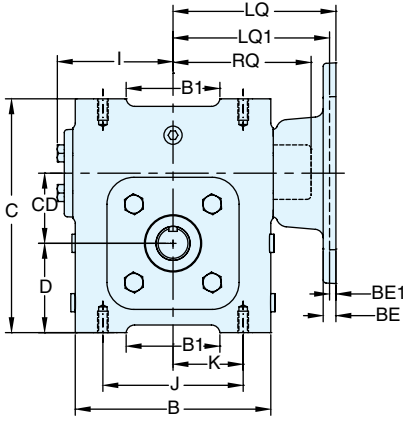


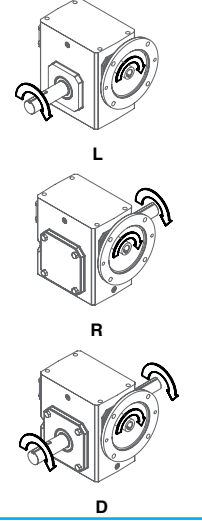
ELECTRA-GEAR EL SERIES DIMENSIONS

STYLES: BMQ, BM, B

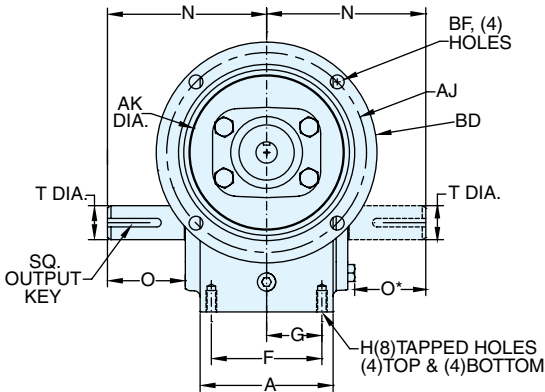
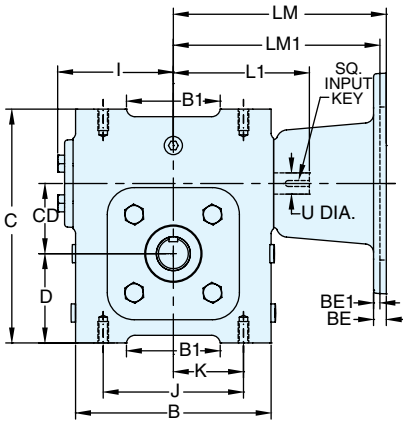
STYLE BMQ



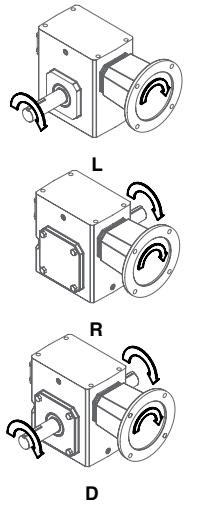
ASSEMBLIES



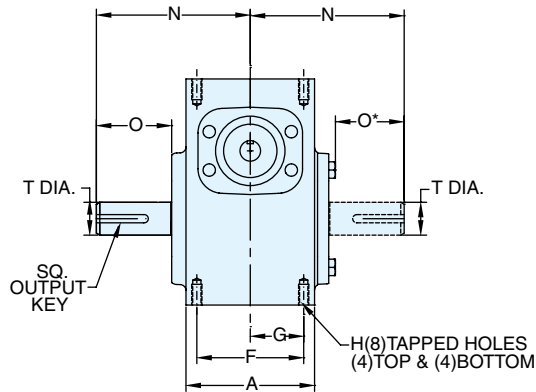
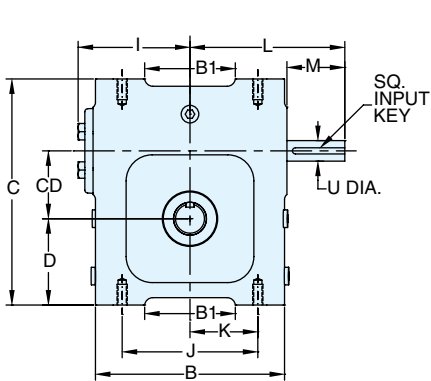
STYLE BM



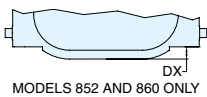
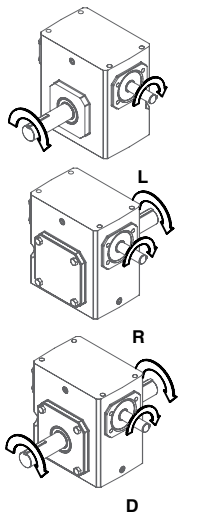
ASSEMBLIES



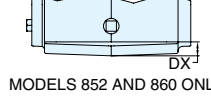
STYLE B



ASSEMBLIES



SIDE VIEW



END VIEW

REVERSE ALL ARROWS FOR OPPOSITE INPUT SHAFT ROTATION. CONTACT FACTORY FOR OTHER MOUNTINGS OR ASSEMBLY POSITIONS.

STYLE BMQ, BM, B DIMENSIONS (Inches)

Size	A	B	B1	C	CD	D	DX	F	G	H		I	J	K	L	M	N	O	O*	T +0.000 -0.0015	U +0.000 -0.0015	Input Key (Style B only)*	Input Key (Style BM only)*	Output Key
										Tap Size	Depth													
EL813	2.82	3.80	--	4.66	1.33	1.72	--	2.00	1.00	5/16-18	0.50	2.40	3.25	1.63	3.82	1.87	4.00	2.16	1.96	0.625	0.500	1/8 x 1.00	1/8 x 1.00	3/16 x 1.38
EL818	3.50	4.83	2.48	5.86	1.75	2.31	--	2.94	1.47	5/16-18	0.63	3.03	3.69	1.84	4.45	1.78	4.39	2.05	1.85	0.750	0.625	3/16 x 1.38	3/16 x .500	3/16 X 1.38
EL821	3.91	5.75	2.76	6.88	2.06	2.63	--	3.25	1.63	3/8-16	0.87	3.40	4.13	2.06	4.82	1.76	4.68	2.29	2.09	1.000	0.625	3/16 X 1.38	3/16 x .500	1/4 x 1.44
EL824	4.06	5.86	--	6.94	2.38	2.50	--	2.88	1.44	3/8-16	0.69	3.61	5.00	2.50	5.51	2.45	5.14	2.66	2.46	1.125	0.750	3/16 X 1.63	3/16 x .500	1/4 X 1.62
EL826	4.84	7.17	4.21	8.00	2.63	3.25	--	3.38	1.69	3/8-16	0.69	4.17	5.00	2.50	6.07	2.45	5.63	2.73	2.53	1.250	0.750	3/16 x 1.63	3/16 x .500	1/4 X 1.62
EL830	5.25	8.11	4.50	8.94	3.00	3.50	--	4.13	2.06	1/2-13	1.00	4.81	5.75	2.88	6.56	2.31	6.62	3.60	3.37	1.500	0.875	3/16 x 1.63	3/16 x .500	3/8 X 2.25
EL832	5.25	8.11	4.53	10.50	3.25	4.00	--	4.13	2.06	1/2-13	1.00	5.00	6.63	3.31	6.75	2.31	6.62	3.60	3.37	1.625	0.875	3/16 x 1.63	3/16 x .500	3/8 X 2.25
EL842	6.13	9.63	5.71	11.69	4.25	4.50	--	3.75	1.88	5/8-11	1.19	6.15	7.00	3.50	8.72	3.47	8.12	4.50	4.22	1.750	1.250	1/4 x 2.50	1/4 x 2.50	1/2 x 2.50
EL852	7.19	11.50	7.82	12.25	5.25	4.25	0.75	5.25	2.63	3/4-10	1.44	7.55	9.62	4.81	10.03	3.38	9.06	4.78	4.50	2.000	1.250	1/4 X 3.00	1/4 x 3.00	1/2 x 2.50
EL860	7.00	13.50	--	14.25	6.00	5.00	1.63	5.38	2.69	7/8-9	1.63	7.88	11.00	5.50	10.99	3.00	10.75	5.25	5.25	2.250	1.500	3/8 x 3.00	3/8 x 2.75	5/8 X 4.00

MOTOR MOUNTING DIMENSIONS

NEMA DIMENSIONS (Inches)

Size	LM	LM1	L1	LQ	LQ1	RQ
	56C/140TC	180TC / 210TC	56C/140TC	180TC / 210TC	56C/140TC	180TC / 210TC
EL813	6.07	--	3.82	--	3.79	--
EL818	5.89	--	3.64	--	4.42	--
EL821	6.26	--	4.00	--	4.79	--
EL824	6.48	7.30	4.29	4.29	4.77	4.09
EL826	7.04	7.86	4.88	4.88	5.33	4.82
EL830	7.67	8.31	5.38	5.38	5.97	5.32
EL832	7.86	8.50	5.56	5.56	6.16	5.51
EL842	11.25	12.53	9.57	9.57	6.45	6.04
EL852	12.65	13.93	10.88	10.88	7.85	7.35
EL860	--	11.94	10.99	--	--	--

NEMA DIMENSIONS (Inches)

Frame	AJ	AK	BD	BE	BE1	Bore Dia.	Keyway	BF
56C	5.88	4.50	6.50	0.38	N/A	.625	3/16 X 3/32	0.41
140TC	5.88	4.50	6.50	0.38	N/A	.875	3/16 X 3/32	0.41
180TC	7.25	8.50	9.00	N/A	0.50	1.125	1/4 X 1/8	0.53
210TC	7.25	8.50	9.00	N/A	0.50	1.375	5/16 X 5/32	0.53

* Applies to double output shaft

◆ Keyway width by depth

* Solid input shaft and C-faced coupling input reducers have different input shaft length and key.



For safety, purchaser or user should provide protective guards over shaft extensions and any couplings, sheaves and belts, sprockets and chains, etc., mounted thereon.

INTEGRAL GEARMOTOR INPUTS AVAILABLE

— Contact Factory for price and availability.

EL SERIES MOUNTING DIMENSIONS

— EL Series mounting dimensions are the same as the original ELECTRA-GEAR product with an option to match the industry standard dimensions of GR Series.
— See page 52 for GR Series dimensions.

ELECTRA-GEAR INTERCHANGE GUIDE

Original Style	New Style
MSC or MLSC	BMQ
MC or MLC	BM
M or ML	B
M + "KV" Kit	B + "KV" Kit

Convert Style B to motorized coupling input using kits shown on page 290.

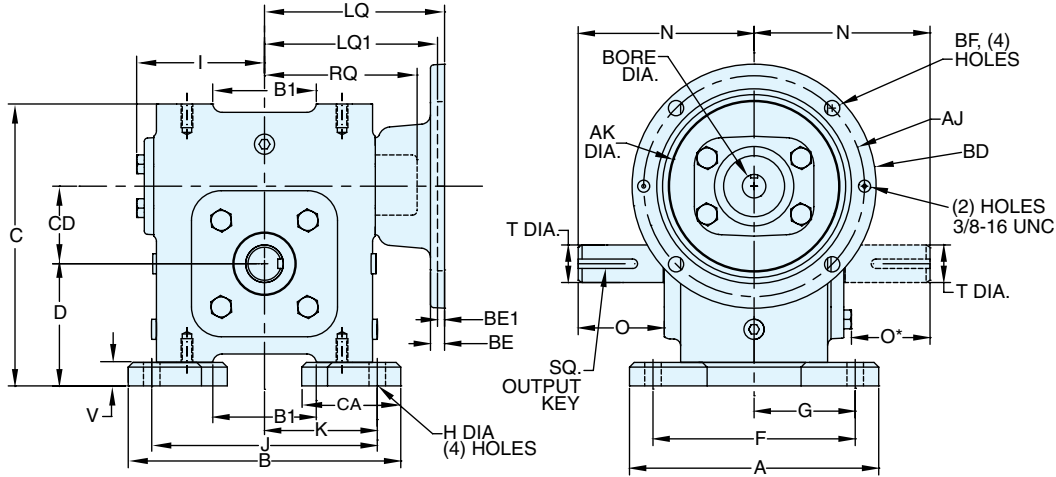
All dimensions shown are for reference only. Contact Factory for certified dimensions.

ELECTRA-GEAR

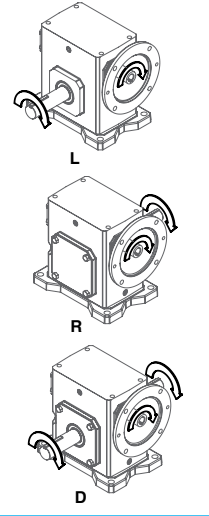
EL SERIES DIMENSIONS

STYLES: TMQ, TM, T

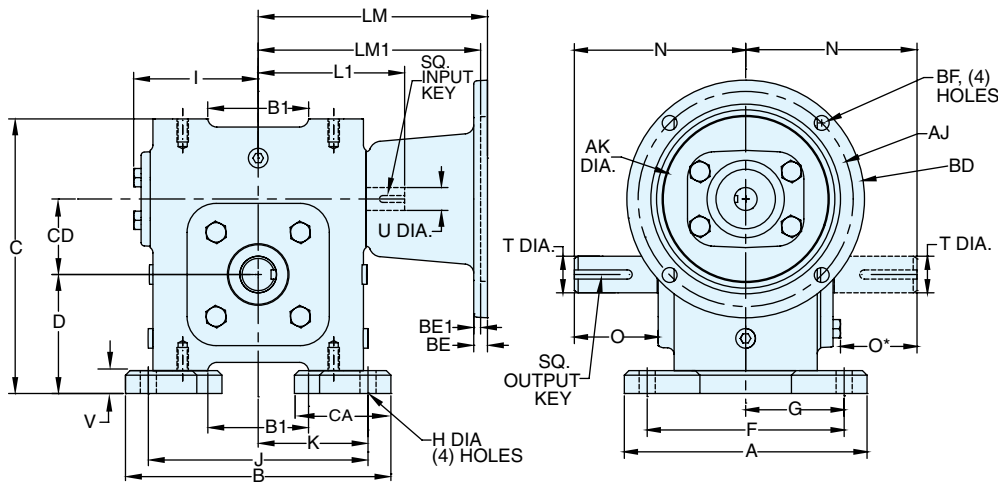
STYLE TMQ



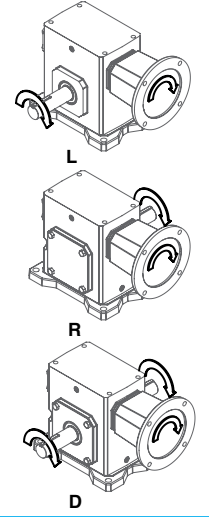
ASSEMBLIES



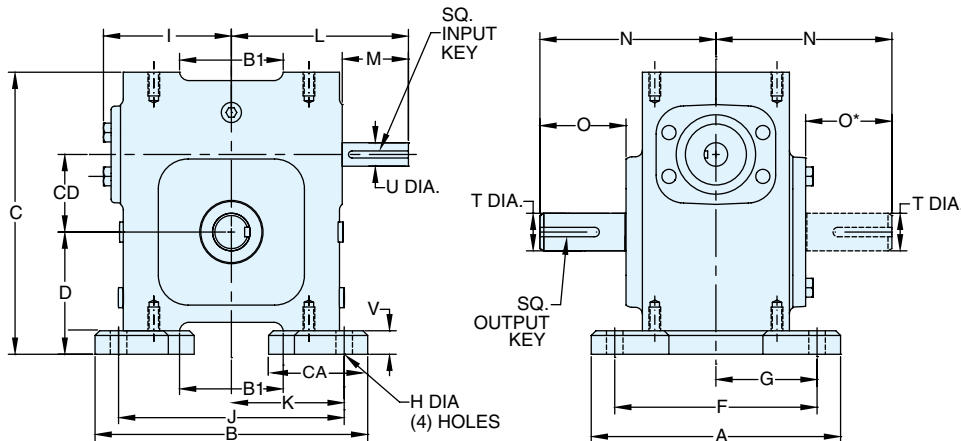
STYLE TM



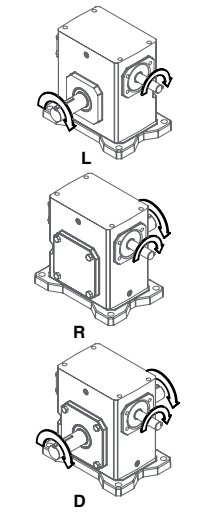
ASSEMBLIES



STYLE T



ASSEMBLIES



REVERSE ALL ARROWS
FOR OPPOSITE INPUT SHAFT
ROTATION. CONTACT FACTORY
FOR OTHER MOUNTINGS OR
ASSEMBLY POSITIONS.

STYLE TMQ, TM, T DIMENSIONS (Inches)

Size	A	B	B1	C	CA	CD	D	F	G	H	I	J	K	L	M	N	O	O*	V	T +0.000 -0.0015	U +0.000 -0.0015	Input Key (Style T only)*	Input Key (Style TM only)*	Output Key
EL813	4.06	5.13	--	5.19	1.56	1.33	2.25	3.31	1.66	0.34	2.40	4.38	2.19	3.82	1.87	4.00	2.16	1.96	0.53	0.625	0.500	1/8 x 1.00	1/8 x 1.00	3/16 x 1.38
EL818	5.19	6.06	2.48	6.42	2.15	1.75	2.84	4.38	2.19	0.38	3.03	5.25	2.63	4.35	1.78	4.39	2.05	1.85	0.56	0.750	0.625	3/16 x 1.38	3/16 x .500	3/16 X 1.38
EL821	6.63	7.25	2.76	7.51	2.66	2.06	3.25	5.38	2.69	0.44	3.40	6.00	3.00	4.71	1.76	4.68	2.29	2.09	0.63	1.000	0.625	3/16 X 1.38	3/16 x .500	1/4 x 1.44
EL824	6.38	7.69	--	7.63	2.59	2.38	3.25	4.88	2.44	0.47	3.61	6.19	3.09	5.51	2.45	5.14	2.66	2.46	0.75	1.125	0.750	3/16 X 1.63	3/16 x .500	1/4 X 1.62
EL826	6.63	8.13	4.21	8.69	2.81	2.63	3.94	5.38	2.69	0.50	4.17	6.88	3.44	6.07	2.45	5.63	2.73	2.53	0.69	1.250	0.750	3/16 x 1.63	3/16 x .500	1/4 X 1.62
EL830	9.00	9.88	4.50	9.69	3.69	3.00	4.25	7.50	3.75	0.56	4.81	8.38	4.19	6.56	2.31	6.62	3.60	3.37	0.75	1.500	0.875	3/16 x 1.63	3/16 x .500	3/8 X 2.25
EL832	9.13	10.88	4.53	11.25	3.69	3.25	4.75	7.63	3.82	0.56	5.00	9.38	4.69	6.75	2.31	6.62	3.60	3.37	0.75	1.625	0.875	3/16 x 1.63	3/16 x .500	3/8 X 2.25
EL842	10.00	10.50	5.71	12.94	3.38	4.25	5.75	8.00	4.00	0.81	6.15	8.50	4.25	8.72	3.47	8.12	4.50	4.22	1.25	1.750	1.250	1/4 x 2.50	1/4 x 2.50	1/2 x 2.50
EL852	10.75	12.13	7.82	13.75	2.50	5.25	5.75	8.75	4.38	0.81	7.55	9.75	4.88	10.03	3.38	9.06	4.78	4.50	1.50	2.000	1.250	1/4 X 3.00	1/4 x 3.00	1/2 x 2.50
EL860	11.75	13.50	--	16.00	4.35	6.00	6.75	9.50	4.75	0.94	7.88	10.50	5.25	10.99	3.00	10.75	5.25	5.25	1.75	2.250	1.500	3/8 x 3.00	3/8 x 2.75	5/8 X 4.00

MOTOR MOUNTING DIMENSIONS

NEMA DIMENSIONS (Inches)

Size	LM	LM1	L1		LQ	LQ1	RQ	
	56C/140TC	180TC / 210TC	56C/140TC	180TC / 210TC	56C/140TC	180TC / 210TC	56C/140TC	180TC / 210TC
EL813	6.07	--	3.82	--	3.79	--	3.09	--
EL818	5.89	--	3.64	--	4.42	--	3.59	--
EL821	6.26	--	4.00	--	4.79	--	4.06	--
EL824	6.48	7.30	4.29	4.29	4.77	4.77	4.09	4.09
EL826	7.04	7.86	4.88	4.88	5.33	5.33	4.82	4.82
EL830	7.67	8.31	5.38	5.38	5.97	5.97	5.32	5.32
EL832	7.86	8.50	5.56	5.56	6.16	6.16	5.51	5.51
EL842	11.25	12.53	9.57	9.57	6.45	6.45	6.04	6.04
EL852	12.65	13.93	10.88	10.88	7.85	7.85	7.35	7.35
EL860	--	11.94	10.99	10.99	--	--	--	--

NEMA DIMENSIONS (Inches)

Frame	AJ	AK	BD	BE	BE1	Bore Dia.	Keyway♦	BF
56C	5.88	4.50	6.50	0.38	N/A	.625	3/16 X 3/32	0.41
140TC	5.88	4.50	6.50	0.38	N/A	.875	3/16 X 3/32	0.41
180TC	7.25	8.50	9.00	N/A	0.50	1.125	1/4 X 1/8	0.53
210TC	7.25	8.50	9.00	N/A	0.50	1.375	5/16 X 5/32	0.53

* Applies to double output shaft

♦ Keyway width by depth

* Solid input shaft and C-faced coupling input reducers have different input shaft length and key.



WARNING For safety, purchaser or user should provide protective guards over shaft extensions and any couplings, sheaves and belts, sprockets and chains, etc., mounted thereon.

INTEGRAL GEARMOTOR INPUTS AVAILABLE

— Contact Factory for price and availability.

EL SERIES MOUNTING DIMENSIONS

— EL Series mounting dimensions are the same as the original ELECTRA-GEAR

product with an option to match the industry standard dimensions of GR Series.

— See page 52 for GR Series dimensions.

ELECTRA-GEAR INTERCHANGE GUIDE

Original Style	New Style
ASC or ALSC	TMQ
AC or ALC	TM
A or AL	T
A + "KV" Kit	T + "KV" Kit

Convert Style T to motorized coupling input using kits shown on page 290.

All dimensions shown are for reference only. Contact Factory for certified dimensions.

ELECTRA-GEAR

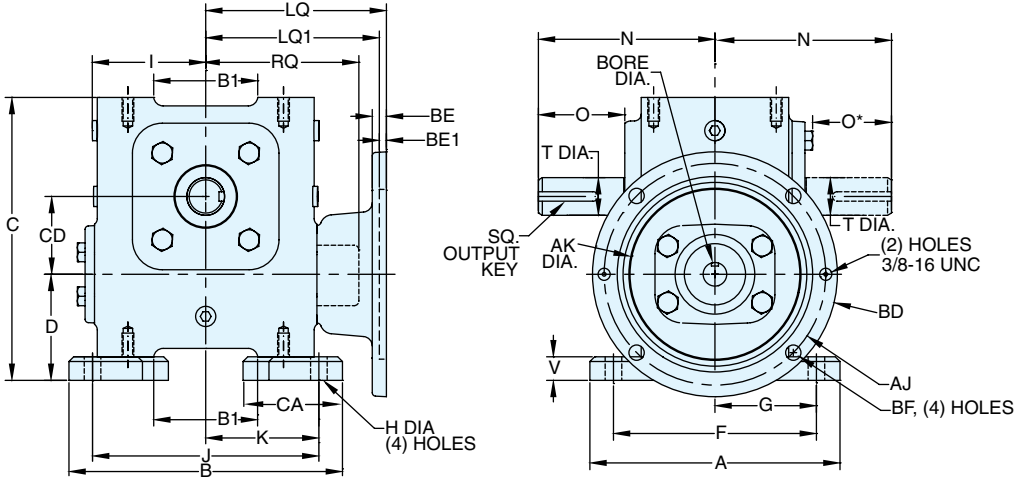
EL SERIES

DIMENSIONS

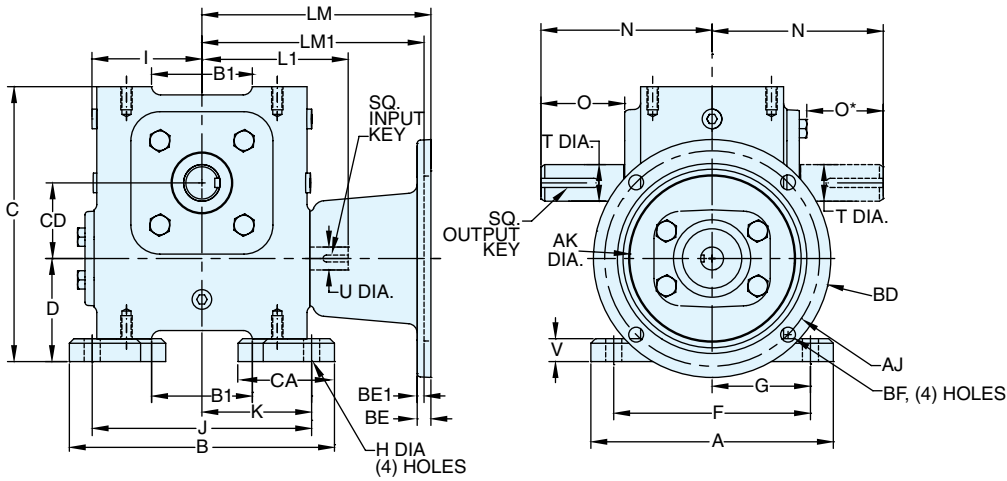
STYLES: UMQ, UM, U

ALUMINUM
EL SERIES

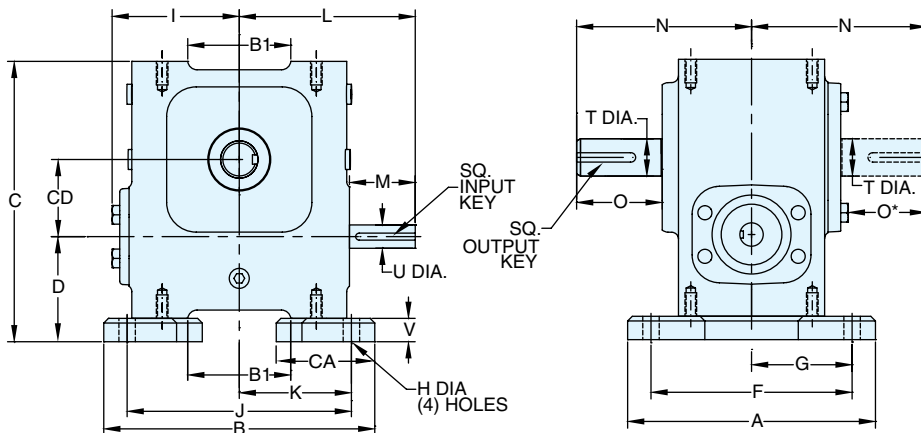
STYLE UMQ



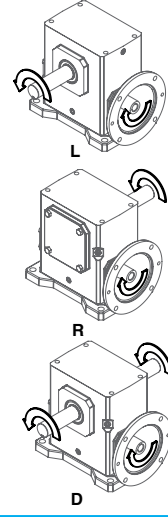
STYLE UM



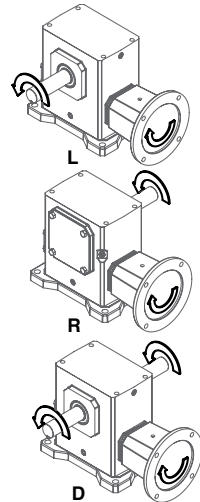
STYLE U



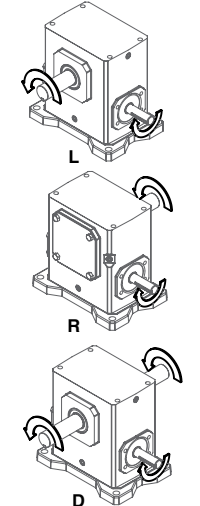
ASSEMBLIES



ASSEMBLIES



ASSEMBLIES



REVERSE ALL ARROWS
FOR OPPOSITE INPUT SHAFT
ROTATION. CONTACT FACTORY
FOR OTHER MOUNTINGS OR
ASSEMBLY POSITIONS.

STYLE UMQ, UM, U DIMENSIONS (Inches)

Size	A	B	B1	C	CA	CD	D	F	G	H	I	J	K	L	M	N	O	O*	V	T +0.000 -0.0015	U +0.000 -0.0015	Input Key (Style U only)*	Input Key (Style UM only)*	Output Key
EL813	4.06	5.13	--	5.19	1.56	1.33	2.13	3.31	1.66	0.34	2.40	4.38	2.19	3.82	1.87	4.00	2.16	1.96	0.53	0.625	0.500	1/8 x 1.00	1/8 x 1.00	3/16 x 1.38
EL818	5.19	6.06	2.48	6.42	2.15	1.75	2.37	4.38	2.19	0.38	3.03	5.25	2.63	4.35	1.78	4.39	2.05	1.85	0.56	0.750	0.625	3/16 x 1.38	3/16 x .500	3/16 X 1.38
EL821	6.63	7.25	2.76	7.51	2.66	2.06	2.82	5.38	2.69	0.44	3.40	6.00	3.00	4.71	1.76	4.68	2.29	2.09	0.63	1.000	0.625	3/16 X 1.38	3/16 x .500	1/4 x 1.44
EL824	6.38	7.69	--	7.63	2.59	2.38	2.81	4.88	2.44	0.47	3.61	6.19	3.09	5.51	2.45	5.14	2.66	2.46	0.75	1.125	0.750	3/16 X 1.63	3/16 x .500	1/4 X 1.62
EL826	6.63	8.13	4.21	8.69	2.81	2.63	2.81	5.38	2.69	0.50	4.17	6.88	3.44	6.07	2.45	5.63	2.73	2.53	0.69	1.250	0.750	3/16 x 1.63	3/16 x .500	1/4 X 1.62
EL830	9.00	9.88	4.50	9.69	3.69	3.00	3.19	7.50	3.75	0.56	4.81	8.38	4.19	6.56	2.31	6.62	3.60	3.37	0.75	1.500	0.875	3/16 x 1.63	3/16 x .500	3/8 X 2.25
EL832	9.13	10.88	4.53	11.25	3.69	3.25	4.00	7.63	3.82	0.56	5.00	9.38	4.69	6.75	2.31	6.62	3.60	3.37	0.75	1.625	0.875	3/16 x 1.63	3/16 x .500	3/8 X 2.25
EL842	10.00	10.50	5.71	12.94	3.38	4.25	4.19	8.00	4.00	0.81	6.15	8.50	4.25	8.72	3.47	8.12	4.50	4.22	1.25	1.750	1.250	1/4 x 2.50	1/4 x 2.50	1/2 x 2.50
EL852	10.75	12.13	7.82	13.75	2.50	5.25	4.25	8.75	4.38	0.81	7.55	9.75	4.88	10.03	3.38	9.06	4.78	4.50	1.50	2.000	1.250	1/4 X 3.00	1/4 x 3.00	1/2 x 2.50
EL860	11.75	13.50	--	16.00	4.35	6.00	5.00	9.50	4.75	0.94	7.88	10.50	5.25	10.99	3.00	10.75	5.25	5.25	1.75	2.250	1.500	3/8 x 3.00	3/8 x 2.75	5/8 X 4.00

MOTOR MOUNTING DIMENSIONS

NEMA DIMENSIONS (Inches)

Size	LM 56C/140TC	LM1 180TC / 210TC	L1 56C/140TC 180TC / 210TC	LQ 56C/140TC	LQ1 180TC / 210TC	RQ 56C/140TC 180TC / 210TC
EL813	6.07	--	3.82	--	3.79	--
EL818	5.89	--	3.64	--	4.42	--
EL821	6.26	--	4.00	--	4.79	--
EL824	6.48	7.30	4.29	4.29	4.77	4.09
EL826	7.04	7.86	4.88	4.88	5.33	4.82
EL830	7.67	8.31	5.38	5.38	5.97	5.32
EL832	7.86	8.50	5.56	5.56	6.16	5.51
EL842	11.25	12.53	9.57	9.57	6.45	6.04
EL852	12.65	13.93	10.88	10.88	7.85	7.35
EL860	--	11.94	10.99	--	--	--

NEMA DIMENSIONS (Inches)

Frame	AJ	AK	BD	BE	BE1	Bore Dia.	Keyway	BF
56C	5.88	4.50	6.50	0.38	N/A	.625	3/16 X 3/32	0.41
140TC	5.88	4.50	6.50	0.38	N/A	.875	3/16 X 3/32	0.41
180TC	7.25	8.50	9.00	N/A	0.50	1.125	1/4 X 1/8	0.53
210TC	7.25	8.50	9.00	N/A	0.50	1.375	5/16 X 5/32	0.53

- * Applies to double output shaft
- ◆ Keyway width by depth
- * Solid input shaft and C-faced coupling input reducers have different input shaft length and key.



For safety, purchaser or user should provide protective guards over shaft extensions and any couplings, sheaves and belts, sprockets and chains, etc., mounted thereon.

INTEGRAL GEARMOTOR INPUTS AVAILABLE

— Contact Factory for price and availability.

EL SERIES MOUNTING DIMENSIONS

- EL Series mounting dimensions are the same as the original ELECTRA-GEAR product with an option to match the industry standard dimensions of GR Series.
- See page 52 for GR Series dimensions.

ELECTRA-GEAR INTERCHANGE GUIDE

Original Style	New Style
NOT A	UMQ
STANDARD CATALOGED	UM
OPTION	U

Convert Style U to motorized coupling input using kits shown on page 290.

All dimensions shown are for reference only. Contact Factory for certified dimensions.

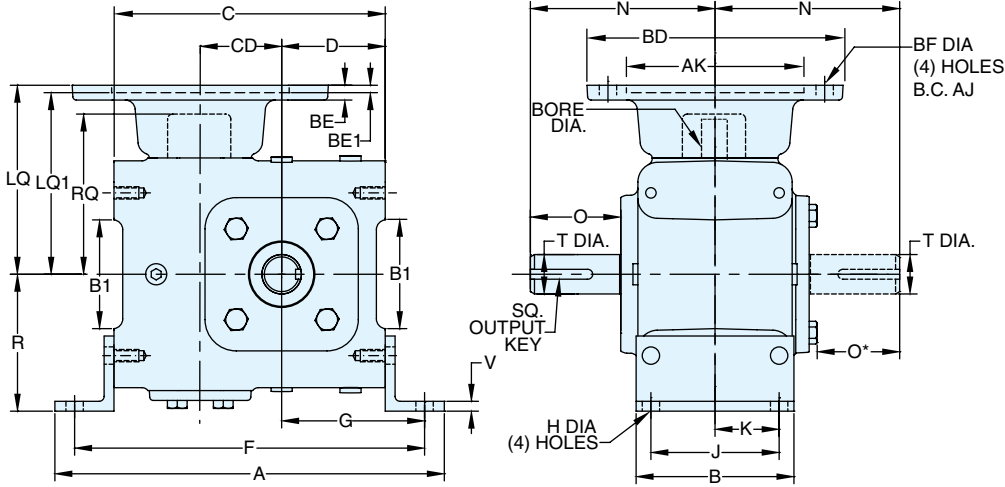
ELECTRA-GEAR

EL SERIES

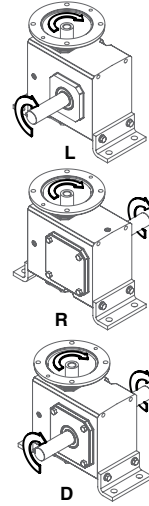
DIMENSIONS

STYLES: JMQ, JM, J

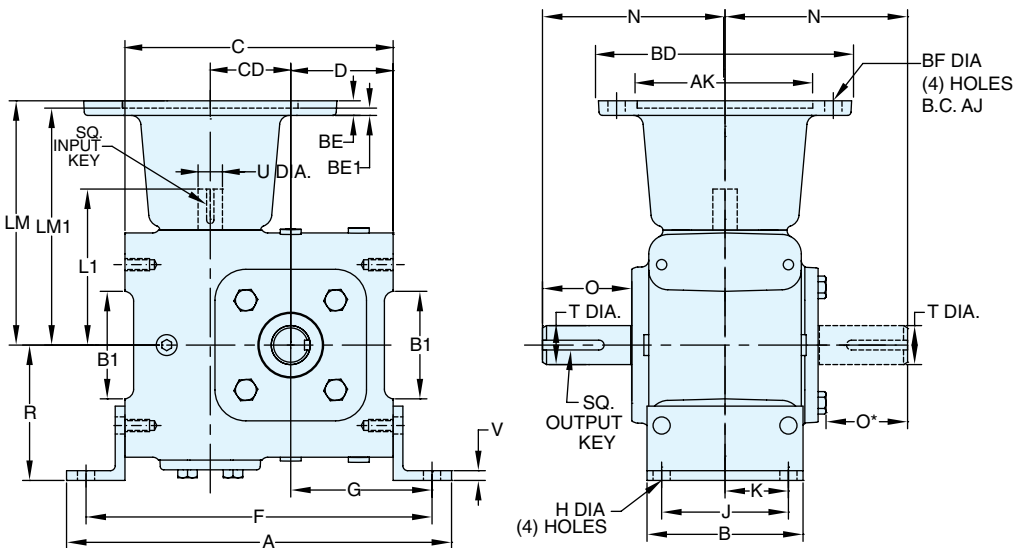
STYLE JMQ



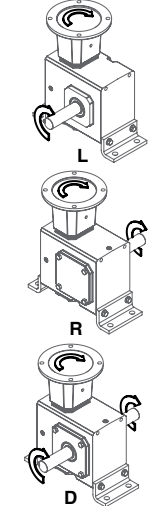
ASSEMBLIES



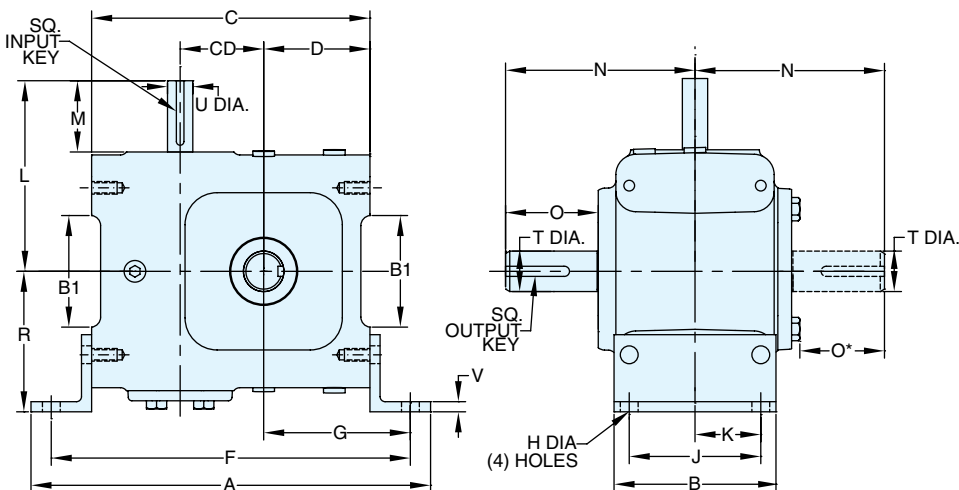
STYLE JM



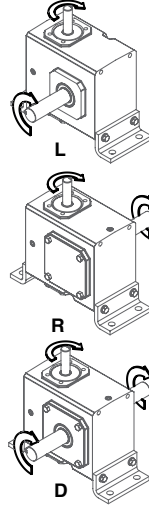
ASSEMBLIES



STYLE J



ASSEMBLIES



REVERSE ALL ARROWS FOR OPPOSITE INPUT SHAFT ROTATION. CONTACT FACTORY FOR OTHER MOUNTINGS OR ASSEMBLY POSITIONS.

STYLE JMQ, JM, J DIMENSIONS (Inches)

Size	A	B	B1	C	CD	D	F	G	H	J	K	L	M	N	O	O*	R	V	T +0.000 -0.0015	U +0.000 -0.0015	Input Key (Style J only)*	Input Key (Style JM only)*	Output Key
EL813	7.16	2.91	--	4.66	1.33	1.72	6.41	2.60	0.34	2.00	1.00	3.82	1.87	4.00	2.16	1.96	2.94	0.19	0.625	0.500	1/8 x 1.00	1/8 x 1.00	3/16 x 1.38
EL818	8.88	3.56	2.48	5.86	1.75	2.31	7.88	3.32	0.38	2.94	1.47	4.35	1.78	4.39	2.05	1.85	2.97	0.38	0.750	0.625	3/16 x 1.38	3/16 x .500	3/16 X 1.38
EL821	9.87	4.00	2.76	6.88	2.06	2.63	8.87	3.62	0.44	3.25	1.63	4.71	1.76	4.68	2.29	2.09	3.47	0.25	1.000	0.625	3/16 X 1.38	3/16 x .500	1/4 x 1.44
EL824	10.31	4.00	--	6.94	2.38	2.50	9.19	3.63	0.69	2.88	1.44	5.51	2.45	5.14	2.66	2.46	4.06	0.38	1.125	0.750	3/16 X 1.63	3/16 x .500	1/4 X 1.62
EL826	12.00	4.38	4.21	8.00	2.63	3.25	10.50	4.50	0.50	3.38	1.69	6.07	2.45	5.63	2.73	2.53	4.03	0.31	1.250	0.750	3/16 x 1.63	3/16 x .500	1/4 X 1.62
EL830	12.94	5.13	4.50	8.94	3.00	3.50	11.44	4.75	0.56	4.13	2.06	6.56	2.31	6.62	3.60	3.37	4.81	0.80	1.500	0.875	3/16 x 1.63	3/16 x .500	3/8 X 2.25
EL832	14.50	5.13	4.53	10.50	3.25	4.00	13.00	5.25	0.56	4.13	2.06	6.75	2.31	6.62	3.60	3.37	5.25	0.38	1.625	0.875	3/16 x 1.63	3/16 x .500	3/8 X 2.25
EL842	17.50	5.13	5.71	11.69	4.25	4.50	14.50	5.91	0.81	3.75	1.88	8.72	3.47	8.12	4.50	4.22	5.63	0.50	1.750	1.250	1/4 x 2.50	1/4 x 2.50	1/2 x 2.50
EL852	20.25	6.50	7.82	12.25	5.25	4.25	16.75	6.50	0.81	5.25	2.63	10.03	3.38	9.06	4.78	4.50	7.63	0.50	2.000	1.250	1/4 X 3.00	1/4 x 3.00	1/2 x 2.50
EL860	22.25	7.00	--	14.25	6.00	5.00	18.75	7.63	0.94	5.38	2.69	10.99	3.00	10.75	5.25	5.25	8.38	0.50	2.250	1.500	3/8 x 3.00	3/8 x 2.75	5/8 X 4.00

MOTOR MOUNTING DIMENSIONS

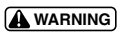
NEMA DIMENSIONS (Inches)

Size	LM 56C/140TC	LM1 180TC / 210TC	L1 56C/140TC	L1 180TC / 210TC	LQ 56C/140TC	LQ1 180TC / 210TC	RQ 56C/140TC	RQ 180TC / 210TC
EL813	6.07	--	3.82	--	3.79	--	3.09	--
EL818	5.89	--	3.64	--	4.42	--	3.59	--
EL821	6.26	--	4.00	--	4.79	--	4.06	--
EL824	6.48	7.30	4.29	4.29	4.77	4.77	4.09	4.09
EL826	7.04	7.86	4.88	4.88	5.33	5.33	4.82	4.82
EL830	7.67	8.31	5.38	5.38	5.97	5.97	5.32	5.32
EL832	7.86	8.50	5.56	5.56	6.16	6.16	5.51	5.51
EL842	11.25	12.53	9.57	9.57	6.45	6.45	6.04	6.04
EL852	12.65	13.93	10.88	10.88	7.85	7.85	7.35	7.35
EL860	--	11.94	10.99	10.99	--	--	--	--

NEMA DIMENSIONS (Inches)

Frame	AJ	AK	BD	BE	BE1	Bore Dia.	Keyway♦	BF
56C	5.88	4.50	6.50	0.38	N/A	.625	3/16 X 3/32	0.41
140TC	5.88	4.50	6.50	0.38	N/A	.875	3/16 X 3/32	0.41
180TC	7.25	8.50	9.00	N/A	0.50	1.125	1/4 X 1/8	0.53
210TC	7.25	8.50	9.00	N/A	0.50	1.375	5/16 X 5/32	0.53

- * Applies to double output shaft
- ♦ Keyway width by depth
- * Solid input shaft and C-faced coupling input reducers have different input shaft length and key.



For safety, purchaser or user should provide protective guards over shaft extensions and any couplings, sheaves and belts, sprockets and chains, etc., mounted thereon.

INTEGRAL GEARMOTOR INPUTS AVAILABLE

— Contact Factory for price and availability.

EL SERIES MOUNTING DIMENSIONS

- EL Series mounting dimensions are the same as the original ELECTRA-GEAR product with an option to match the industry standard dimensions of GR Series.
- See page 52 for GR Series dimensions.

ELECTRA-GEAR INTERCHANGE GUIDE

Original Style	New Style
JBSC or JBLSC	JMQ
JBC or JBLC	JM
JB or JBL	J
JB + "KV" Kit	J + "KV" Kit

Convert Style J to motorized coupling input using kits shown on page 290.

All dimensions shown are for reference only. Contact Factory for certified dimensions.

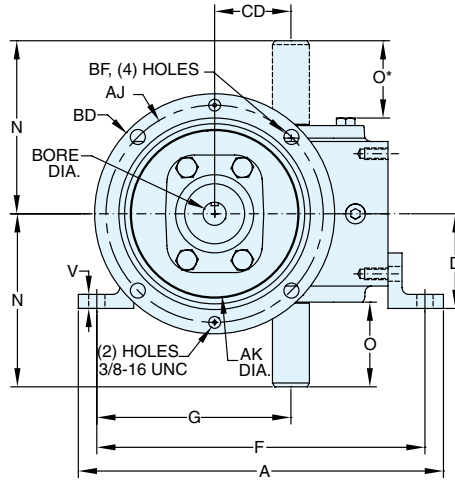
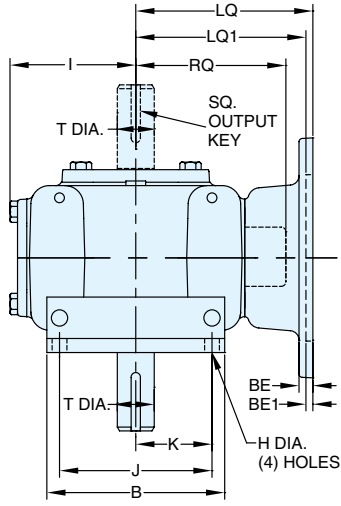
ELECTRA-GEAR

EL SERIES

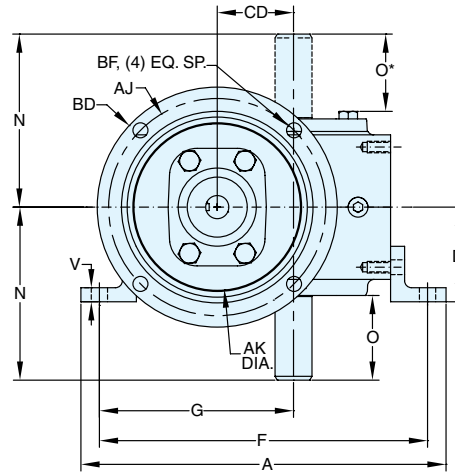
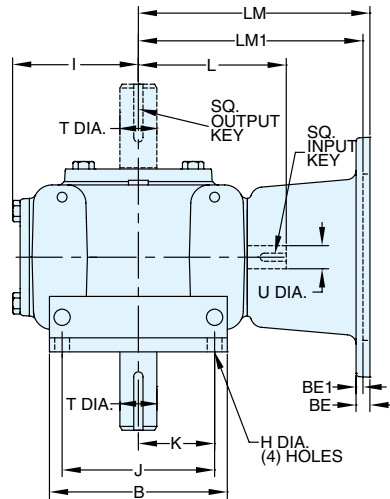
DIMENSIONS

STYLES: VLMQ, VLM, VL

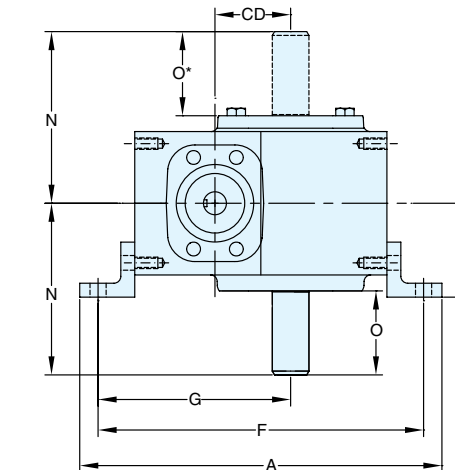
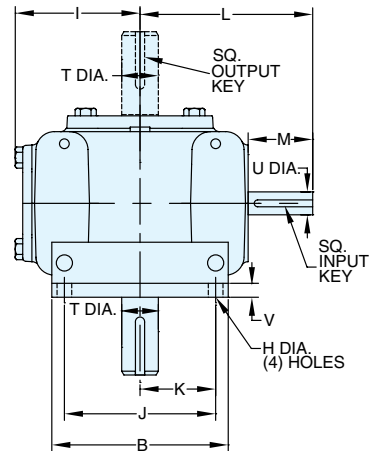
STYLE VLMQ



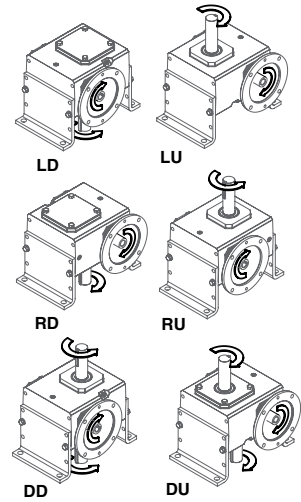
STYLE VLM



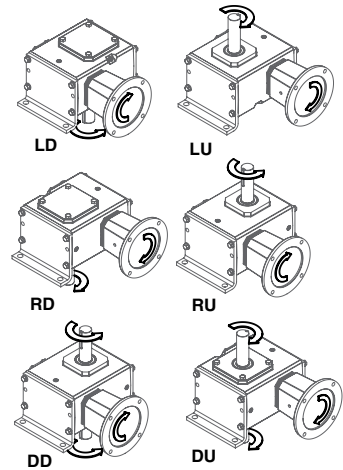
STYLE VL



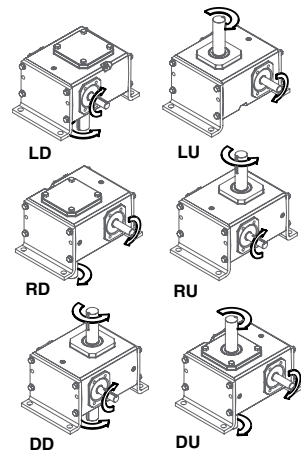
ASSEMBLIES



ASSEMBLIES



ASSEMBLIES



REVERSE ALL ARROWS FOR OPPOSITE INPUT SHAFT ROTATION. CONTACT FACTORY FOR OTHER MOUNTINGS OR ASSEMBLY POSITIONS.

STYLE VLMQ, VLM, VL DIMENSIONS (Inches)

Size	A	B	CD	D	F	G	H	I	J	K	L	M	N	O	O*	V	T +0.000 -0.0015	U +0.000 -0.0015	Input Key (Style VL only)*	Input Key (Style VLM only)*	Output Key
EL813	7.16	4.13	1.33	2.31	6.16	3.69	0.34	2.40	3.25	1.63	3.82	1.87	4.00	2.16	1.96	0.19	0.625	0.500	1/8 x 1.00	1/8 x 1.00	3/16 x 1.38
EL818	8.88	4.25	1.75	2.28	7.88	4.57	0.38	3.03	3.69	1.84	4.35	1.78	4.39	2.05	1.85	0.38	0.750	0.625	3/16 x 1.38	3/16 x .500	3/16 X 1.38
EL821	9.87	4.81	2.06	2.56	8.87	5.25	0.44	3.40	4.13	2.06	4.71	1.76	4.68	2.29	2.09	0.38	1.000	0.625	3/16 x 1.38	3/16 x .500	1/4 x 1.44
EL824	10.88	5.88	2.38	2.75	9.38	5.66	0.50	3.61	5.00	2.50	5.51	2.45	5.14	2.66	2.46	0.31	1.125	0.750	3/16 X 1.63	3/16 x .500	1/4 X 1.62
EL826	12.00	5.88	2.63	2.81	10.50	6.00	0.50	4.17	5.00	2.50	6.07	2.45	5.63	2.73	2.53	0.31	1.250	0.750	3/16 x 1.63	3/16 x .500	1/4 X 1.62
EL830	12.94	6.75	3.00	3.75	11.44	6.69	0.56	4.81	5.75	2.88	6.56	2.31	6.62	3.60	3.37	0.25	1.500	0.875	3/16 x 1.63	3/16 x .500	3/8 X 2.25
EL832	14.50	7.63	3.25	3.75	13.00	7.75	0.56	5.00	6.63	3.31	6.75	2.31	6.62	3.60	3.37	0.38	1.625	0.875	3/16 x 1.63	3/16 x .500	3/8 X 2.25
EL842	17.50	8.38	4.25	4.59	14.50	8.69	0.81	6.15	7.00	3.50	8.72	3.47	8.12	4.50	4.22	0.50	1.750	1.250	1/4 x 2.50	1/4 x 2.50	1/2 x 2.50
EL852	19.25	11.50	5.25	5.88	16.88	10.35	0.81	7.55	9.63	4.82	10.03	3.38	9.06	4.78	4.50	0.50	2.000	1.250	1/4 X 3.00	1/4 x 3.00	1/2 x 2.50
EL860	21.25	13.50	6.00	6.38	18.63	11.44	0.94	7.88	11.00	5.50	10.99	3.00	10.75	5.25	5.25	0.63	2.250	1.500	3/8 x 3.00	3/8 x 2.75	5/8 X 4.00

MOTOR MOUNTING DIMENSIONS

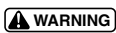
NEMA DIMENSIONS (Inches)

Size	LM	LM1	L1		LQ	LQ1	RQ	
	56C/140TC	180TC / 210TC	56C/140TC	180TC / 210TC	56C/140TC	180TC / 210TC	56C/140TC	180TC / 210TC
EL813	6.07	--	3.82	--	3.79	--	3.09	--
EL818	5.89	--	3.64	--	4.42	--	3.59	--
EL821	6.26	--	4.00	--	4.79	--	4.06	--
EL824	6.48	7.30	4.29	4.29	4.77	4.77	4.09	4.09
EL826	7.04	7.86	4.88	4.88	5.33	5.33	4.82	4.82
EL830	7.67	8.31	5.38	5.38	5.97	5.97	5.32	5.32
EL832	7.86	8.50	5.56	5.56	6.16	6.16	5.51	5.51
EL842	11.25	12.53	9.57	9.57	6.45	6.45	6.04	6.04
EL852	12.65	13.93	10.88	10.88	7.85	7.85	7.35	7.35
EL860	--	11.94	10.99	10.99	--	--	--	--

NEMA DIMENSIONS (Inches)

Frame	AJ	AK	BD	BE	BE1	Bore Dia.	Keyway	BF
56C	5.88	4.50	6.50	0.38	N/A	.625	3/16 X 3/32	0.41
140TC	5.88	4.50	6.50	0.38	N/A	.875	3/16 X 3/32	0.41
180TC	7.25	8.50	9.00	N/A	0.50	1.125	1/4 X 1/8	0.53
210TC	7.25	8.50	9.00	N/A	0.50	1.375	5/16 X 5/32	0.53

- * Applies to double output shaft
- ◆ Keyway width by depth
- * Solid input shaft and C-faced coupling input reducers have different input shaft length and key.



For safety, purchaser or user should provide protective guards over shaft extensions and any couplings, sheaves and belts, sprockets and chains, etc., mounted thereon.

INTEGRAL GEARMOTOR INPUTS AVAILABLE

— Contact Factory for price and availability.

EL SERIES MOUNTING DIMENSIONS

— EL Series mounting dimensions are the same as the original ELECTRA-GEAR product with an option to match the industry standard dimensions of GR Series.
 — See page 52 for GR Series dimensions.

ELECTRA-GEAR INTERCHANGE GUIDE

Original Style	New Style
BSC or BLSC	VLMQ
BC or BLC	VLM
B or BL	VL
B + "KV" Kit	VL + "KV" Kit

Convert Style VL to motorized coupling input using kits shown on page 290.

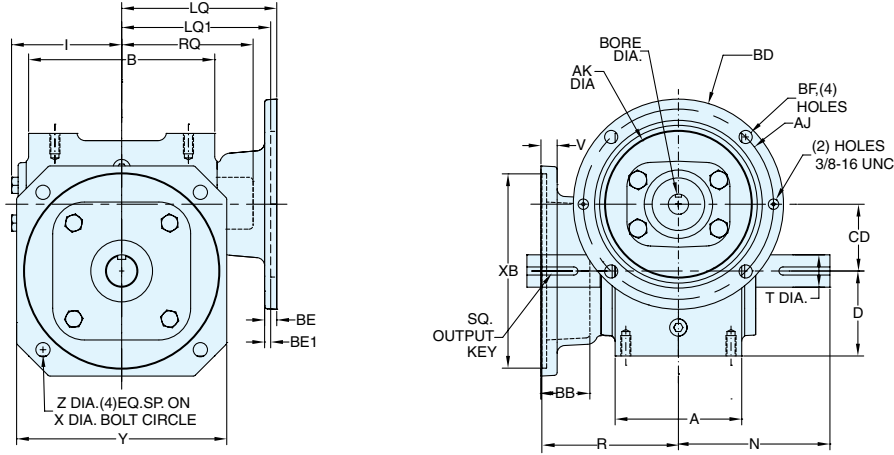
All dimensions shown are for reference only. Contact Factory for certified dimensions.

ELECTRA-GEAR

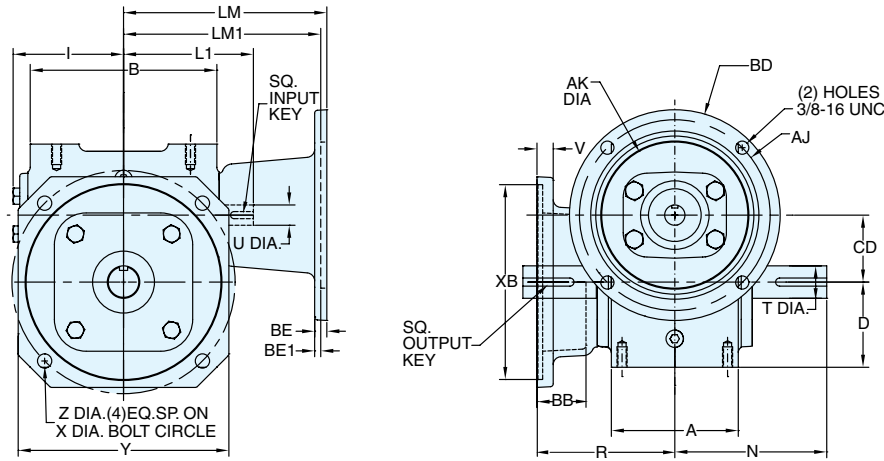
EL SERIES DIMENSIONS

STYLES: FRMQ, FRM, FR

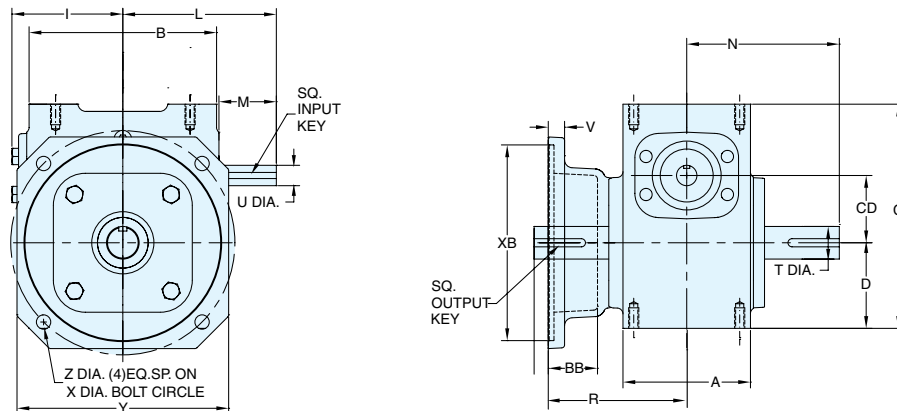
STYLE FRMQ



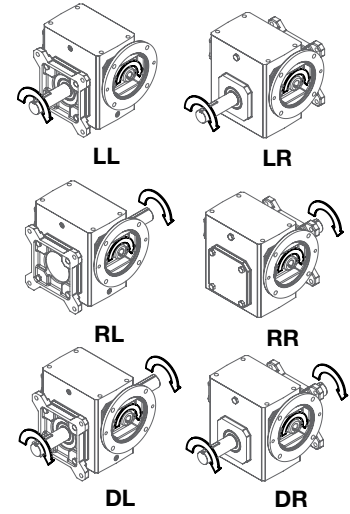
STYLE FRM



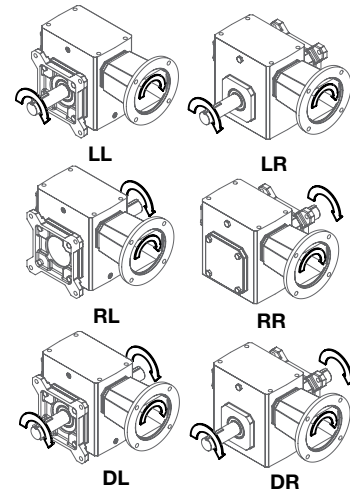
STYLE FR



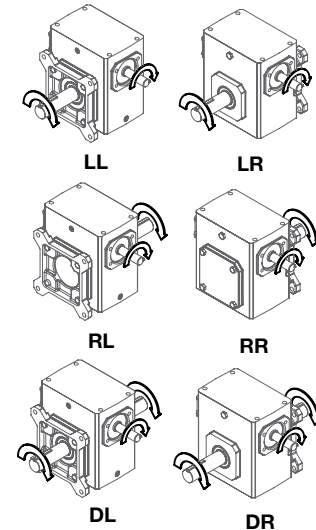
ASSEMBLIES



ASSEMBLIES



ASSEMBLIES



REVERSE ALL ARROWS FOR OPPOSITE INPUT SHAFT ROTATION. CONTACT FACTORY FOR OTHER MOUNTINGS OR ASSEMBLY POSITIONS.

STYLE FRMQ, FRM, FR DIMENSIONS (Inches)

Size	A	B	BB	C	CD	D	I	L	M	N	R	V	X	XB	Y	Z	T +0.000 -0.0015	U +0.000 -0.0015	Input Key (Style F only)*	Input Key (Style FM only)*	Output Key
EL818	3.50	4.83	1.27	5.86	1.75	2.31	3.03	4.35	1.78	4.39	3.53	0.38	3.13	-	4.00	0.34	0.750	0.625	3/16 x 1.38	3/16 x .500	3/16 X 1.38
EL821	3.91	5.75	1.51	6.88	2.06	2.63	3.40	4.71	1.76	4.68	4.25	0.50	6.88	6.00	6.49	0.44	1.000	0.625	3/16 X 1.38	3/16 x .500	1/4 x 1.44
EL824	4.06	5.86	1.35	6.94	2.38	2.50	3.61	5.51	2.45	5.14	4.15	0.63	7.75	6.50	6.99	0.50	1.125	0.750	3/16 X 1.63	3/16 x .500	1/4 X 1.62
EL826	4.84	7.17	1.35	8.00	2.63	3.25	4.17	6.07	2.45	5.63	4.56	0.63	7.75	6.50	6.99	0.50	1.250	0.750	3/16 x 1.63	3/16 x .500	1/4 X 1.62
EL830	5.25	8.11	2.36	8.94	3.00	3.50	4.81	6.56	2.31	6.62	5.75	0.81	9.125-9.500	8.25	8.74	0.56	1.500	0.875	3/16 x 1.63	3/16 x .500	3/8 X 2.25
EL832	5.25	8.11	2.54	10.50	3.25	4.00	5.00	6.75	2.31	6.62	5.94	0.81	9.125-9.500	8.25	8.74	0.56	1.625	0.875	3/16 x 1.63	3/16 x .500	3/8 X 2.25
EL842	6.13	9.63	2.06	11.69	4.25	4.50	6.15	8.72	3.47	8.12	6.06	0.75	10.75	9.75	11.00	0.69	1.750	1.250	1/4 x 2.50	1/4 x 2.50	1/2 x 2.50
EL852	7.19	11.50	1.18	12.25	5.25	4.25	7.55	10.03	3.38	9.06	5.75	0.69	12.75	11.50	14.24	0.81	2.000	1.250	1/4 X 3.00	1/4 x 3.00	1/2 x 2.50
EL860	7.00	13.50	0.25	14.25	6.00	5.00	7.88	10.99	3.00	10.75	7.25	1.00	15.25	13.00	17.00	0.81	2.250	1.500	3/8 x 3.00	3/8 x 2.75	5/8 X 4.00

MOTOR MOUNTING DIMENSIONS

NEMA DIMENSIONS (Inches)

Size	LM 56C/140TC	LM1 180TC / 210TC	L1 56C/140TC / 180TC / 210TC	LQ 56C/140TC	LQ1 180TC / 210TC	RQ 56C/140TC / 180TC / 210TC
EL818	5.89	--	3.64	--	4.42	3.59
EL821	6.26	--	4.00	--	4.79	4.06
EL824	6.48	7.30	4.29	4.29	4.77	4.09
EL826	7.04	7.86	4.88	4.88	5.33	4.82
EL830	7.67	8.31	5.38	5.38	5.97	5.32
EL832	7.86	8.50	5.56	5.56	6.16	5.51
EL842	11.25	12.53	9.57	9.57	6.45	6.04
EL852	12.65	13.93	10.88	10.88	7.85	7.35
EL860	--	11.94	10.99	--	--	--

NEMA DIMENSIONS (Inches)

Frame	AJ	AK	BD	BE	BE1	Bore Dia.	Keyway	BF
56C	5.88	4.50	6.50	0.38	N/A	.625	3/16 X 3/32	0.41
140TC	5.88	4.50	6.50	0.38	N/A	.875	3/16 X 3/32	0.41
180TC	7.25	8.50	9.00	N/A	0.50	1.125	1/4 X 1/8	0.53
210TC	7.25	8.50	9.00	N/A	0.50	1.375	5/16 X 5/32	0.53

- * Applies to double output shaft
 - ◆ Keyway width by depth
 - * Solid input shaft and C-faced coupling input reducers have different input shaft length and key.
- NOTE: Size 813 not available.



For safety, purchaser or user should provide protective guards over shaft extensions and any couplings, sheaves and belts, sprockets and chains, etc., mounted thereon.

INTEGRAL GEARMOTOR INPUTS AVAILABLE

— Contact Factory for price and availability.

EL SERIES MOUNTING DIMENSIONS

- EL Series mounting dimensions are the same as the original ELECTRA-GEAR product with an option to match the industry standard dimensions of GR Series.
- See page 52 for GR Series dimensions.

ELECTRA-GEAR INTERCHANGE GUIDE

Original Style	New Style
NOT A	FRMQ
STANDARD CATALOGED	FRM
OPTION	FR

NOTE: Not a direct replacement to original ring base mounts. Styles R, RC, RSC.

Convert Style FR to motorized coupling input using kits shown on page 290.

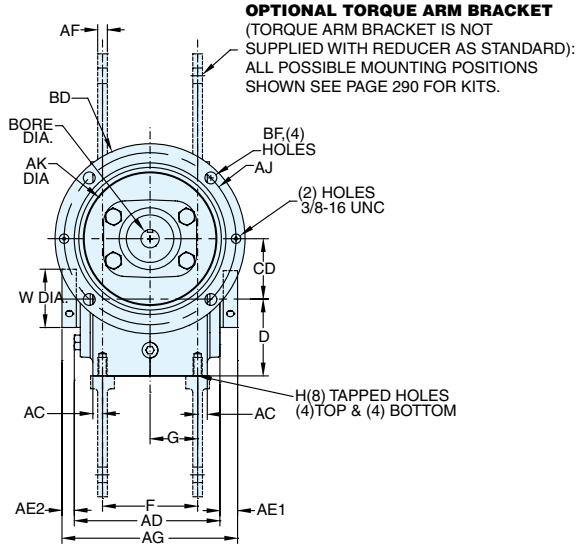
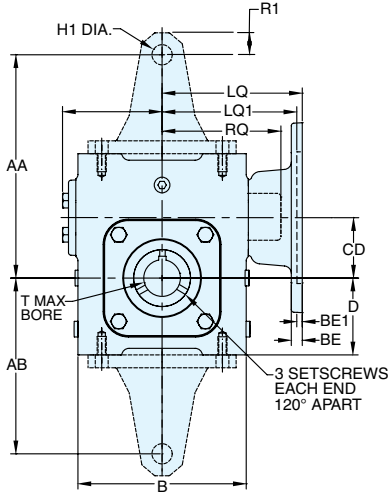
All dimensions shown are for reference only. Contact Factory for certified dimensions.

ELECTRA-GEAR

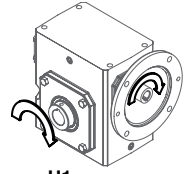
EL SERIES DIMENSIONS

STYLES: HMQ, HM, H

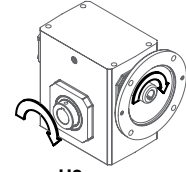
STYLE HMQ



ASSEMBLIES



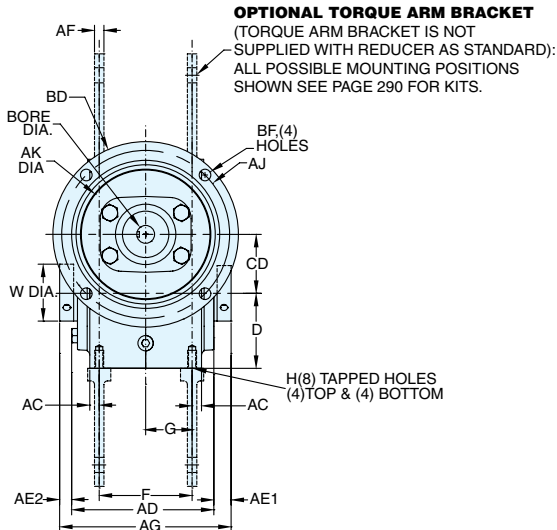
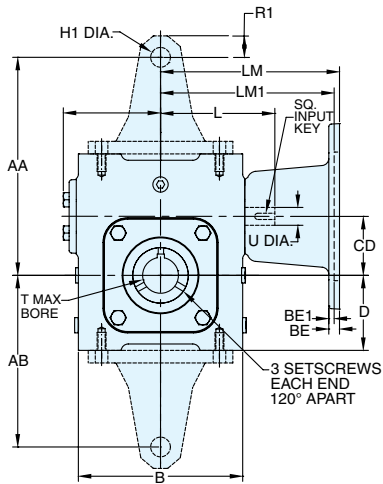
H1



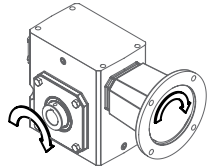
H2

H1 SUPPLIED AS STANDARD UNLESS SPECIFIED. ACCESSORY KITS CAN MOUNT TO EITHER OUTPUT SIDE OF REDUCER.

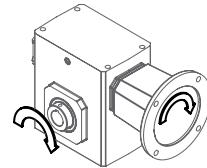
STYLE HM



ASSEMBLIES



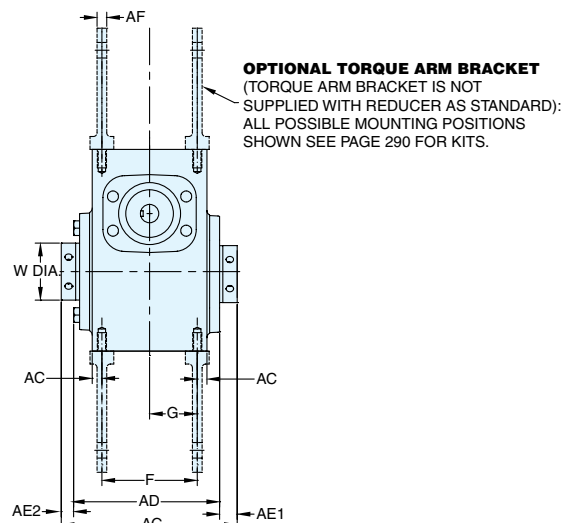
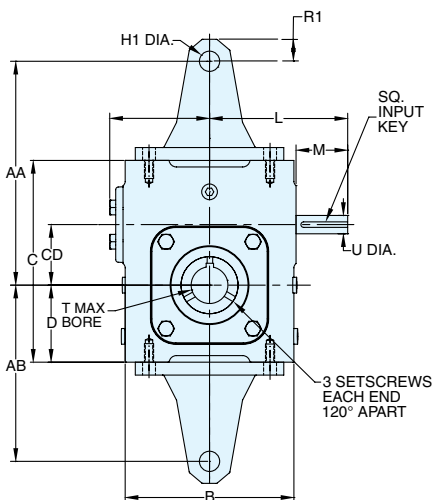
H1



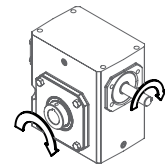
H2

H1 SUPPLIED AS STANDARD UNLESS SPECIFIED. ACCESSORY KITS CAN MOUNT TO EITHER OUTPUT SIDE OF REDUCER.

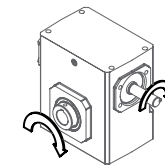
STYLE H



ASSEMBLIES



H1



H2

REVERSE ALL ARROWS FOR OPPOSITE INPUT SHAFT ROTATION. CONTACT FACTORY FOR OTHER MOUNTINGS OR ASSEMBLY POSITIONS.

H1 SUPPLIED AS STANDARD UNLESS SPECIFIED. ACCESSORY KITS CAN MOUNT TO EITHER OUTPUT SIDE OF REDUCER.

STYLE HMQ, HM, H DIMENSIONS (Inches)

Size	AA	AB	AC	AD	AE1	AE2	AF	AG	B	C	CD	D	F	G	H1	I	L	M	R1	V	T MAX* +0.000 -0.0025	U +0.000 -0.0015	Input Key (Style H only)*	Input Key (Style HM only)*	Output Key
EL813	--	--	0.41	3.89	0.58	0.26	--	4.75	3.80	4.66	1.33	1.72	2.00	1.00	--	2.40	3.82	1.87	-	1.00	0.625	0.500	1/8 x 1.00	--	3/16 x 1.50
EL818	6.25	5.00	0.28	4.72	0.49	0.29	0.69	5.50	4.83	5.86	1.75	2.31	2.95	1.48	0.53	3.03	4.35	1.78	0.66	1.44	1.000	0.625	3/16 x 1.38	3/16 x .500	1/4 x 3.00
EL821	7.63	6.00	0.33	4.98	0.60	0.42	0.69	6.00	5.75	6.88	2.06	2.63	3.25	1.63	0.53	3.40	4.71	1.76	0.75	1.94	1.500*	0.625	3/16 X 1.38	3/16 x .500	3/8 x 3.00
EL824	7.81	5.87	0.59	5.17	1.02	0.81	0.69	6.00	5.86	6.94	2.38	2.50	2.88	1.44	0.53	3.61	5.51	2.45	0.75	1.94	1.500*	0.750	3/16 X 1.63	3/16 x .500	3/8 x 3.00
EL826	8.50	7.00	0.73	6.00	0.60	0.40	0.69	7.00	7.17	8.00	2.63	3.25	3.37	1.69	0.53	4.17	6.07	2.45	0.75	1.94	1.500*	0.750	3/16 x 1.63	3/16 x .500	3/8 x 3.00
EL830	9.94	8.00	0.56	6.52	0.60	0.38	0.69	7.50	8.11	8.94	3.00	3.50	4.13	2.07	0.53	4.81	6.56	2.31	0.81	2.75	2.188	0.875	3/16 x 1.63	3/16 x .500	1/2 x 3.00
EL832	12.50	10.00	0.56	6.52	0.60	0.38	0.69	7.50	8.11	10.50	3.25	4.00	4.13	2.07	0.53	5.00	6.75	2.31	0.88	2.75	2.188	0.875	3/16 x 1.63	3/16 x .500	1/2 x 3.00
EL842	14.69	12.00	1.19	7.52	0.63	0.35	0.69	8.50	9.63	11.69	4.25	4.50	3.75	1.88	0.53	6.15	8.72	3.47	0.88	2.75	2.188	1.250	1/4 x 2.50	1/4 x 2.50	1/2 x 3.00
EL852	17.75	14.00	0.97	8.84	0.97	0.69	0.81	10.50	11.50	12.25	5.25	4.25	5.25	2.63	0.66	7.55	10.03	3.38	1.13	4.26	3.438	1.250	1/4 X 3.00	1/4 x 3.00	7/8 x 4.00
EL860	20.25	16.00	0.81	11.00	0.81	0.81	0.81	10.38	13.50	14.25	6.00	5.00	5.38	2.69	0.66	7.88	10.99	3.00	1.13	3.74	3.438	1.500	3/8 x 3.00	3/8 x 2.75	7/8 x 4.00

MOTOR MOUNTING DIMENSIONS

NEMA DIMENSIONS (Inches)

Size	LM 56C/140TC	LM1 180TC / 210TC	L1 56C/140TC / 180TC / 210TC		LQ 56C/140TC	LQ1 180TC / 210TC	RQ 56C/140TC / 180TC / 210TC	
EL813	6.07	--	3.82	--	3.79	--	3.09	--
EL818	5.89	--	3.64	--	4.42	--	3.59	--
EL821	6.26	--	4.00	--	4.79	--	4.06	--
EL824	6.48	7.30	4.29	4.29	4.77	4.77	4.09	4.09
EL826	7.04	7.86	4.88	4.88	5.33	5.33	4.82	4.82
EL830	7.67	8.31	5.38	5.38	5.97	5.97	5.32	5.32
EL832	7.86	8.50	5.56	5.56	6.16	6.16	5.51	5.51
EL842	11.25	12.53	9.57	9.57	6.45	6.45	6.04	6.04
EL852	12.65	13.93	10.88	10.88	7.85	7.85	7.35	7.35
EL860	--	11.94	10.99	10.99	--	--	--	--

NEMA DIMENSIONS (Inches)

Frame	AJ	AK	BD	BE	BE1	Bore Dia.	Keyway	BF
56C	5.88	4.50	6.50	0.38	N/A	.625	3/16 X 3/32	0.41
140TC	5.88	4.50	6.50	0.38	N/A	.875	3/16 X 3/32	0.41
180TC	7.25	8.50	9.00	N/A	0.50	1.125	1/4 X 1/8	0.53
210TC	7.25	8.50	9.00	N/A	0.50	1.375	5/16 X 5/32	0.53

- Max bore dimensions shown. For additional bores available, refer to page 128.
- ◆ Keyway width by depth
- * Solid input shaft and C-faced coupling input reducers have different input shaft length and key.

Note: Torque arm bracket available separately. Refer to page 290 for kits. If a special bracket is required, refer to Style BMQ dimensions for mounting pad dimensions on top/bottom of reducer.



WARNING For safety, purchaser or user should provide protective guards over shaft extensions and any couplings, sheaves and belts, sprockets and chains, etc., mounted thereon.

INTEGRAL GEARMOTOR INPUTS AVAILABLE

— Contact Factory for price and availability.

EL SERIES MOUNTING DIMENSIONS

- EL Series mounting dimensions are the same as the original ELECTRA-GEAR product with an option to match the industry standard dimensions of GR Series.
- See page 52 for GR Series dimensions.

ELECTRA-GEAR INTERCHANGE GUIDE

Original Style	New Style
MHSC	HMQ
MHC	HM
MH	H
MH + "KV" Kit	H + "KV" Kit

Convert Style H to motorized coupling input using kits shown on page 290.

All dimensions shown are for reference only. Contact Factory for certified dimensions.

ELECTRA-GEAR

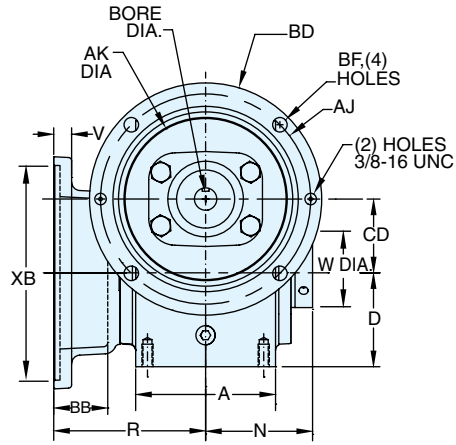
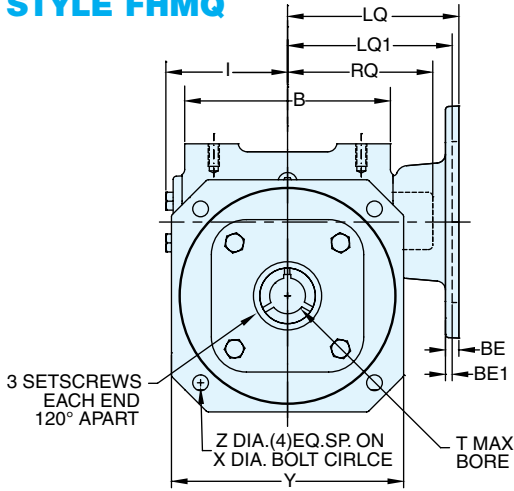
EL SERIES

DIMENSIONS

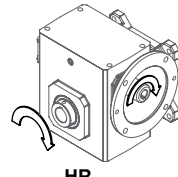
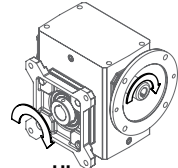
STYLES: FHM, FHM, FH



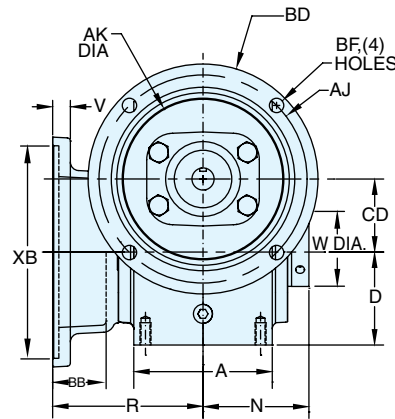
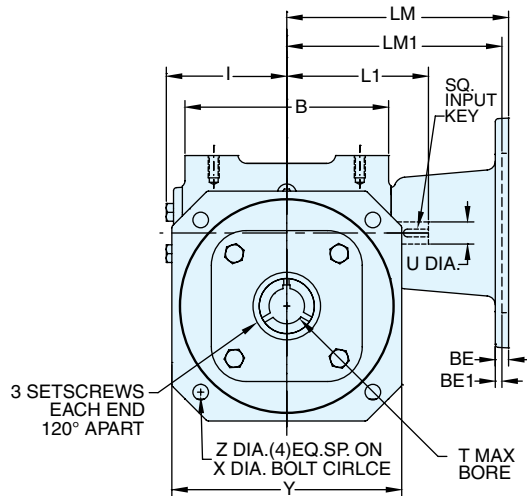
STYLE FHM



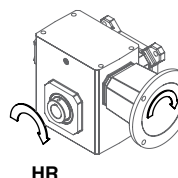
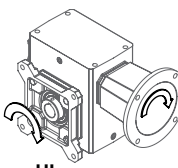
ASSEMBLIES



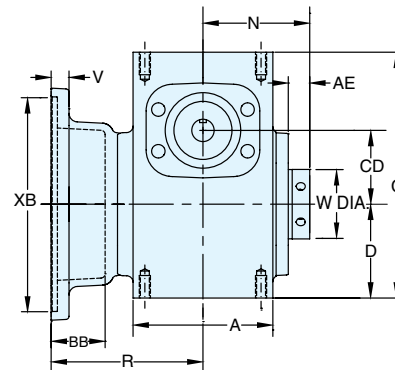
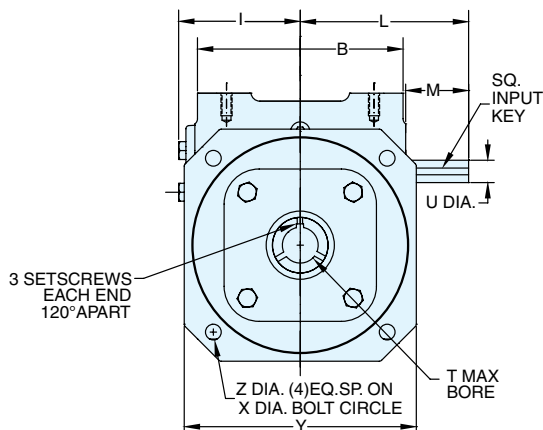
STYLE FHM



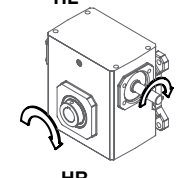
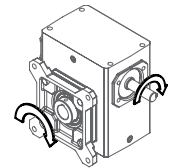
ASSEMBLIES



STYLE FH



ASSEMBLIES



REVERSE ALL ARROWS FOR OPPOSITE INPUT SHAFT ROTATION. CONTACT FACTORY FOR OTHER MOUNTINGS OR ASSEMBLY POSITIONS.

STYLE FHM, FHM, FH DIMENSIONS (Inches)

Size	A	AE	B	BB	C	CD	D	I	L	M	N	R	V	X	XB	Y	Z	T MAX* +0.000 -0.0025	U +0.000 -0.0015	Input Key (Style FH only)*	Input Key (Style FHM only)*	Output Key
EL818	3.50	0.49	4.83	1.27	5.86	1.75	2.31	3.03	4.35	1.78	2.75	3.53	0.38	3.13	-	4.00	0.34	1.000	0.625	3/16 x 1.38	3/16 x .500	1/4 x 3.00
EL821	3.91	0.60	5.75	1.51	6.88	2.06	2.63	3.40	4.71	1.76	2.99	4.25	0.50	6.88	6.00	6.49	0.44	1.500*	0.625	3/16 X 1.38	3/16 x .500	3/8 x 3.00
EL824	4.06	1.05	5.86	1.35	6.94	2.38	2.50	3.61	5.51	2.45	3.51	4.15	0.63	7.38	6.50	6.99	0.50	1.500*	0.750	3/16 X 1.63	3/16 x .500	3/8 x 3.00
EL826	4.84	0.60	7.17	1.35	8.00	2.63	3.25	4.17	6.07	2.45	3.19	4.56	0.63	7.38	6.50	6.99	0.50	1.500*	0.750	3/16 x 1.63	3/16 x .500	3/8 x 3.00
EL830	5.25	0.60	8.11	2.36	8.94	3.00	3.50	4.81	6.56	2.31	3.75	5.75	0.81	9.125-9.500	8.25	8.74	0.56	2.188	0.875	3/16 x 1.63	3/16 x .500	1/2 x 3.00
EL832	5.25	0.60	8.11	2.54	10.50	3.25	4.00	5.00	6.75	2.31	3.75	5.94	0.81	10.75	9.75	8.74	0.56	2.188	0.875	3/16 x 1.63	3/16 x .500	1/2 x 3.00
EL842	6.13	0.63	9.63	2.06	11.69	4.25	4.50	6.15	8.72	3.47	4.25	6.06	0.75	10.75	10.25	11.00	0.69	2.188	1.250	1/4 x 2.50	1/4 x 2.50	1/2 x 3.00
EL852	7.19	0.97	11.50	1.18	12.25	5.25	4.25	7.55	10.03	3.38	5.25	5.75	0.69	12.75	11.50	14.24	0.81	3.438	1.250	1/4 X 3.00	1/4 x 3.00	7/8 x 4.00
EL860	7.00	0.81	13.50	0.25	14.25	6.00	5.00	7.88	10.99	3.00	5.19	7.25	1.00	15.25	13.00	17.00	0.81	3.438	1.500	3/8 x 3.00	3/8 x 2.75	7/8 x 4.00

MOTOR MOUNTING DIMENSIONS

NEMA DIMENSIONS (Inches)

Size	LM 56C/140TC	LM1 180TC / 210TC	L1 56C/140TC 180TC / 210TC	LQ 56C/140TC	LQ1 180TC / 210TC	RQ 56C/140TC 180TC / 210TC
EL818	5.89	--	3.64	--	4.42	--
EL821	6.26	--	4.00	--	4.79	--
EL824	6.48	7.30	4.29	4.29	4.77	4.09
EL826	7.04	7.86	4.88	4.88	5.33	4.82
EL830	7.67	8.31	5.38	5.38	5.97	5.32
EL832	7.86	8.50	5.56	5.56	6.16	5.51
EL842	11.25	12.53	9.57	9.57	6.45	6.04
EL852	12.65	13.93	10.88	10.88	7.85	7.35
EL860	--	11.94	10.99	10.99	--	--

NEMA DIMENSIONS (Inches)

Frame	AJ	AK	BD	BE	BE1	Bore Dia.	Keyway	BF
56C	5.88	4.50	6.50	0.38	N/A	.625	3/16 X 3/32	0.41
140TC	5.88	4.50	6.50	0.38	N/A	.875	3/16 X 3/32	0.41
180TC	7.25	8.50	9.00	N/A	0.50	1.125	1/4 X 1/8	0.53
210TC	7.25	8.50	9.00	N/A	0.50	1.375	5/16 X 5/32	0.53

- Max bore dimensions shown. For additional bores available, refer to page 128.
- ◆ Keyway width by depth
- * Solid input shaft and C-faced coupling input reducers have different input shaft length and key.



For safety, purchaser or user should provide protective guards over shaft extensions and any couplings, sheaves and belts, sprockets and chains, etc., mounted thereon.

INTEGRAL GEARMOTOR INPUTS AVAILABLE

— Contact Factory for price and availability.

EL SERIES MOUNTING DIMENSIONS

- EL Series mounting dimensions are the same as the original ELECTRA-GEAR product with an option to match the industry standard dimensions of GR Series.
- See page 52 for GR Series dimensions.

ELECTRA-GEAR INTERCHANGE GUIDE

Original Style	New Style
RHSC	FHM
RHC	FHM
RH	FH
RH + "KV" Kit	FH + "KV" Kit

Convert Style FH to motorized coupling input using kits shown on page 290.

All dimensions shown are for reference only. Contact Factory for certified dimensions.